



**CITY OF REDLANDS**  
**FACILITIES & COMMUNITY SERVICES**  
**DEPARTMENT**  
**DUMPSTER ENCLOSURE**  
**STANDARDS**

**TRASH ENCLOSURE STANDARDS  
CITY OF REDLANDS  
FACILITIES & COMMUNITY SERVICES DEPARTMENT**

1. All commercial, industrial, office and multiple family (4 units or more) projects shall be equipped with one or more dumpster enclosures. Dumpsters must have unobstructed access and located to ensure City trash trucks can safely service dumpsters.

2. The required number of enclosures shall be determined by the Facilities & Community Services Department, preferably by the Solid Waste Division management.

3. Site plan and architectural review shall be conducted by City Staff and presented to the appropriate departments for review. Enclosures shall be located so as to allow for convenient access and servicing, as well as ADA accessibility.

4. The single bin "Basic Enclosure" may only be used for projects having four or less units (e.g. apartments, condos, commercial lease spaces, etc.) requiring only one bin to serve the entire development.

5. All projects having five or more units or any project requiring two or more bins must use one of the "Full Feature" designs incorporating pedestrian access which includes ADA access. If only a single bin is needed for a project having five or more units, the full feature enclosure may be modified by reducing the size to a single bin capacity. Applicants are encouraged to use designs with gate-less pedestrian access where space allows.

6. Submitted plans shall be drawn to scale and shall include complete elevations, plot plan and construction details.

7. Design modifications to accommodate special circumstances are allowed, however, all deviations from the standard designs and policies must be approved by City Staff prior to building permit ~~issue~~

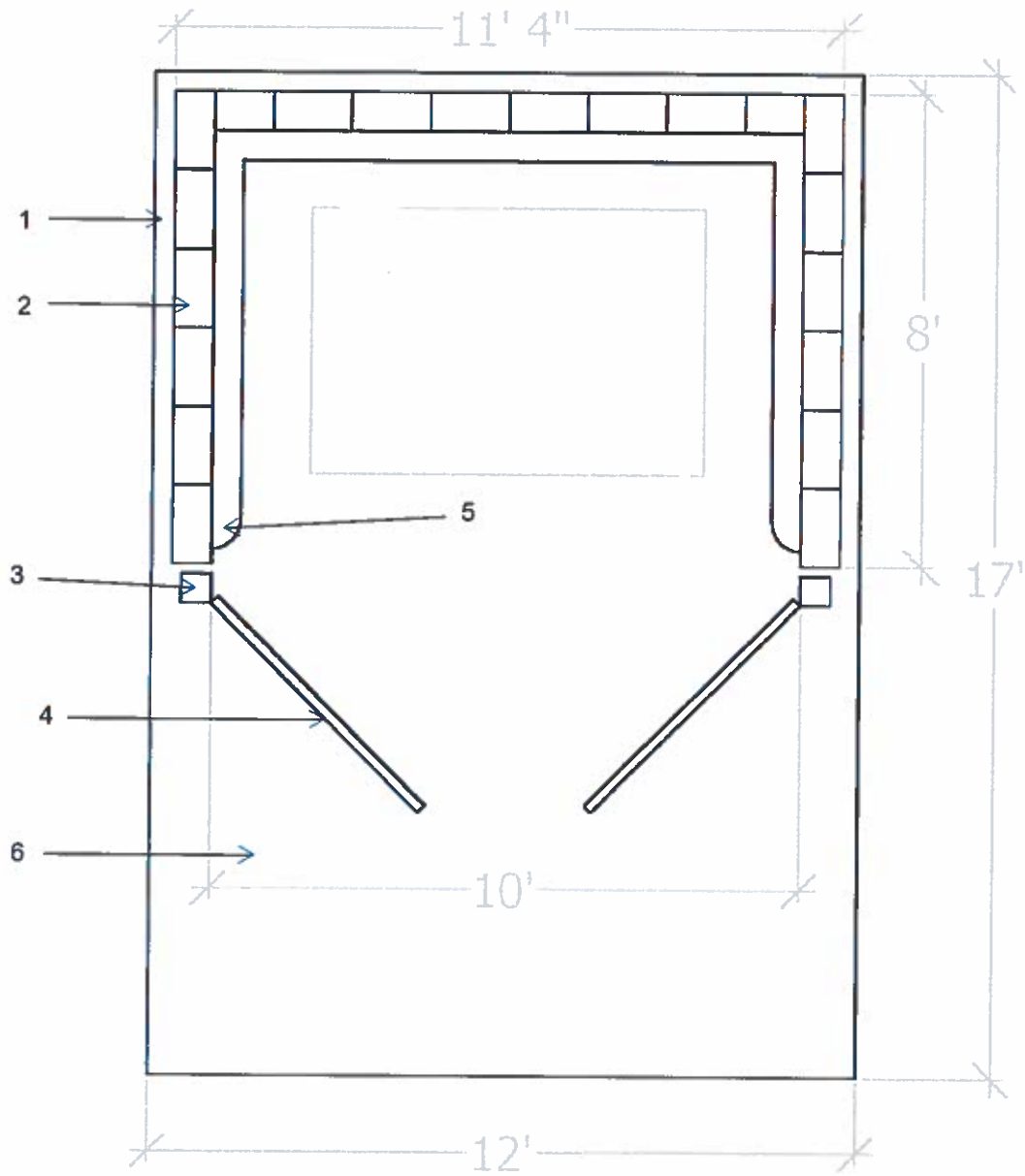
8. Materials shall be specified in submitted plans as follows:

- PEDESTRIAN/ADA ACCESS
- GATE TYPE
- FINISH COLOR
- SIZE
- MASONARY CAP TYPE
- BLOCK TYPE
- BLOCK COLOR
- PROVISIONS
- LATCH STYLE/TYPE
- OTHER PERTINENT INFO

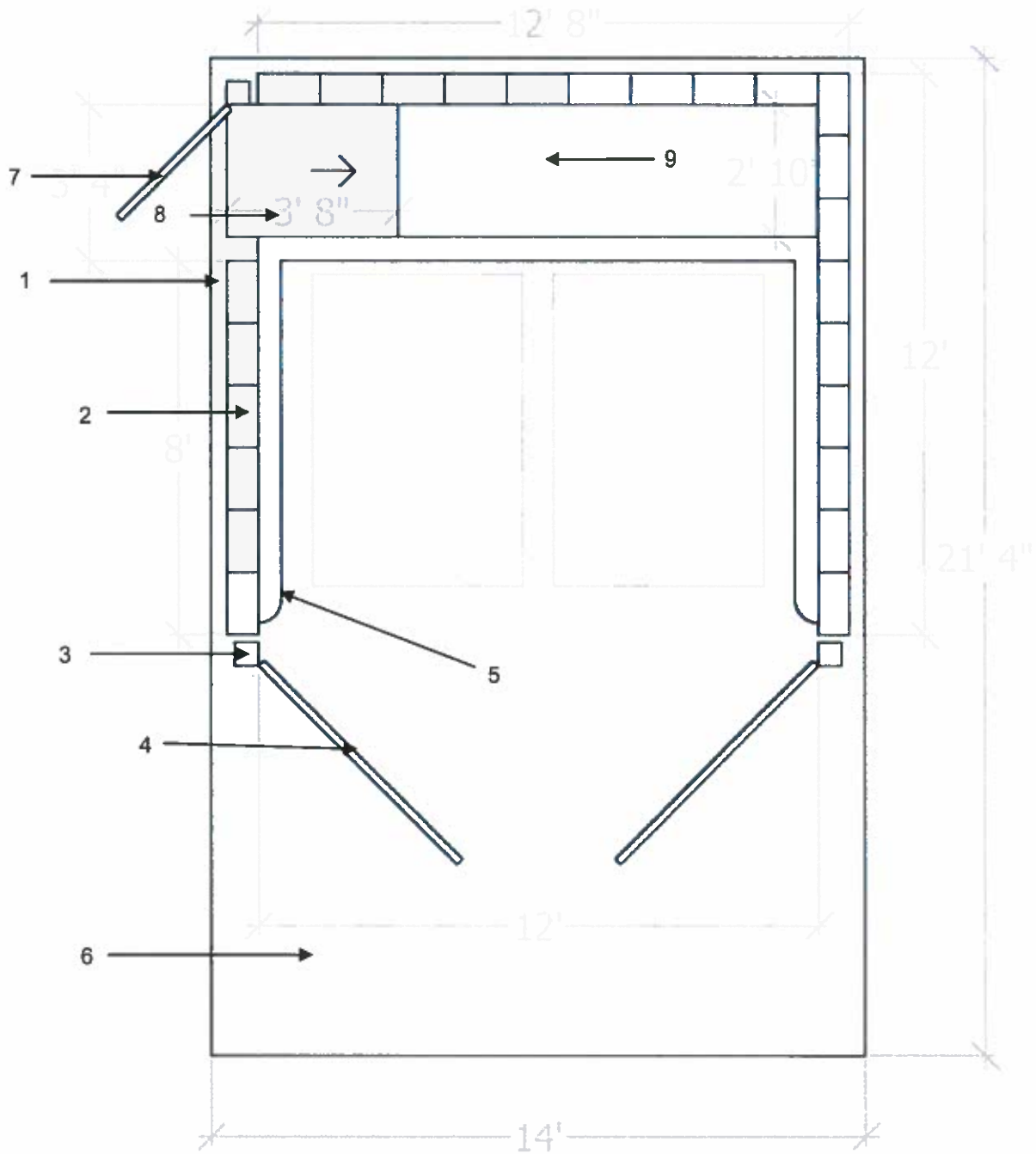
## **Trash Enclosure Construction Guidelines**

- 1.** 4" PCC foundation, extending 4" beyond enclosure walls, over 90% compacted base.
- 2.** \* 8" x 8" x 16" (8" x 6" x 16" OK for slumped block), 6' high masonry walls designed to complement surrounding architecture and aesthetics.
- 3.** Block cells shall be grouted with a concrete slurry mix. Grouting should be performed at the first cell of any edge of the enclosure structure, every 4'
- 4.** 6" square 3/16" thick steel jamb tubes, concrete filled. 2" clearance between tube and walls.
- 5.** 16 ga. ribbed metal gates with 2" x 2" x 1/4" steel angle iron frame and diagonal bracing. Continuous weld all joints.
- 6.** 6" x 6" PCC curb.
- 7.** 6" thick PCC loading pad over 90% compacted base, 4% maximum slope.
- 8.** Pedestrian gate, constructed to standards of Construction Note 4.
- 9.** Access ramp (use where raised walkway is to be installed).
- 10.** 6" raised PCC walkway, 36" wide (optional).
- 11.** Metal hinge, continuously welded to gate and jamb tube.
- 12.** 3/16" metal plate with slide bolt assembly welded in place (see detail).
- 13.** 14" x 36" PCC footing.
- 14.** #4 horizontal re-bar.
- 15.** #4 vertical re-bar @ 32" O/C in PCC filled cells.
- 16.** #4 re-bar continuous in footing under walls and gate openings.
- 17.** Cane bolt and cane bolt receptacle (see detail sheet). \* Note: Tilt-up concrete trash enclosures, built to equivalent specifications are also acceptable, if approved by the Design Review Board and/or staff.

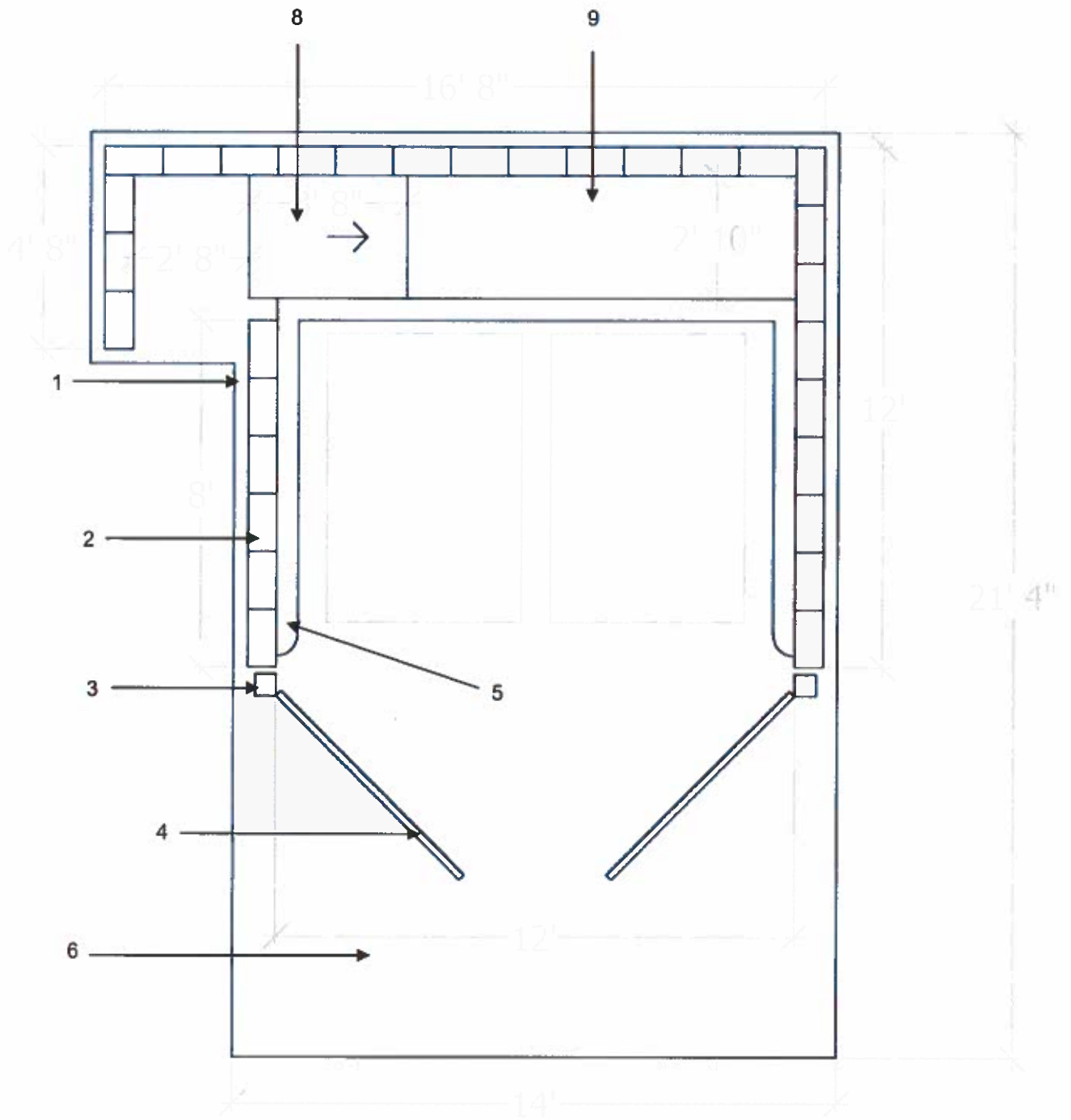
# 1. BASIC ENCLOSURE



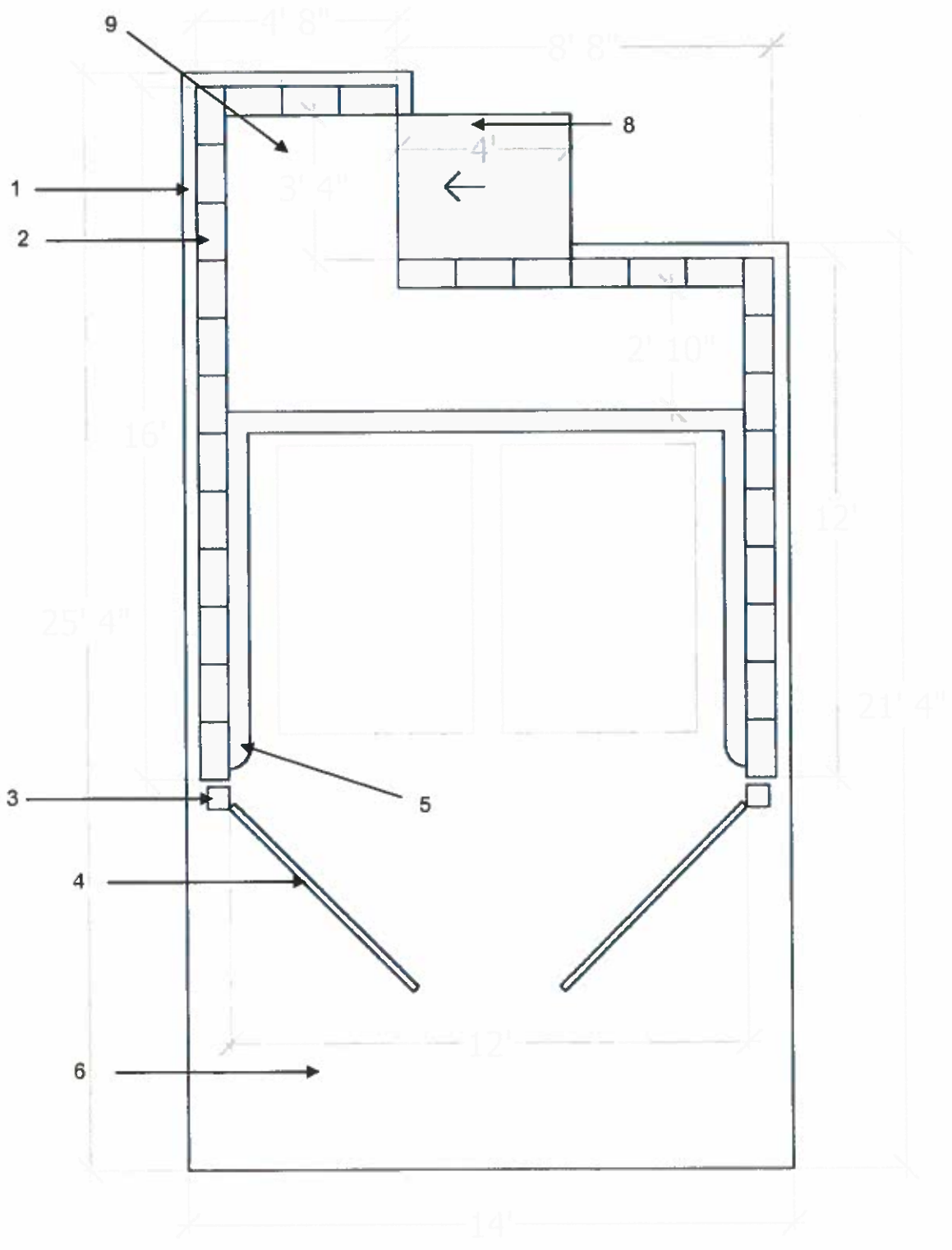
**2. FULL FEATURE ENCLOSURE, GATED PEDESTRIAN ENTRANCE, SIDE BY SIDE DUMPSTERS**



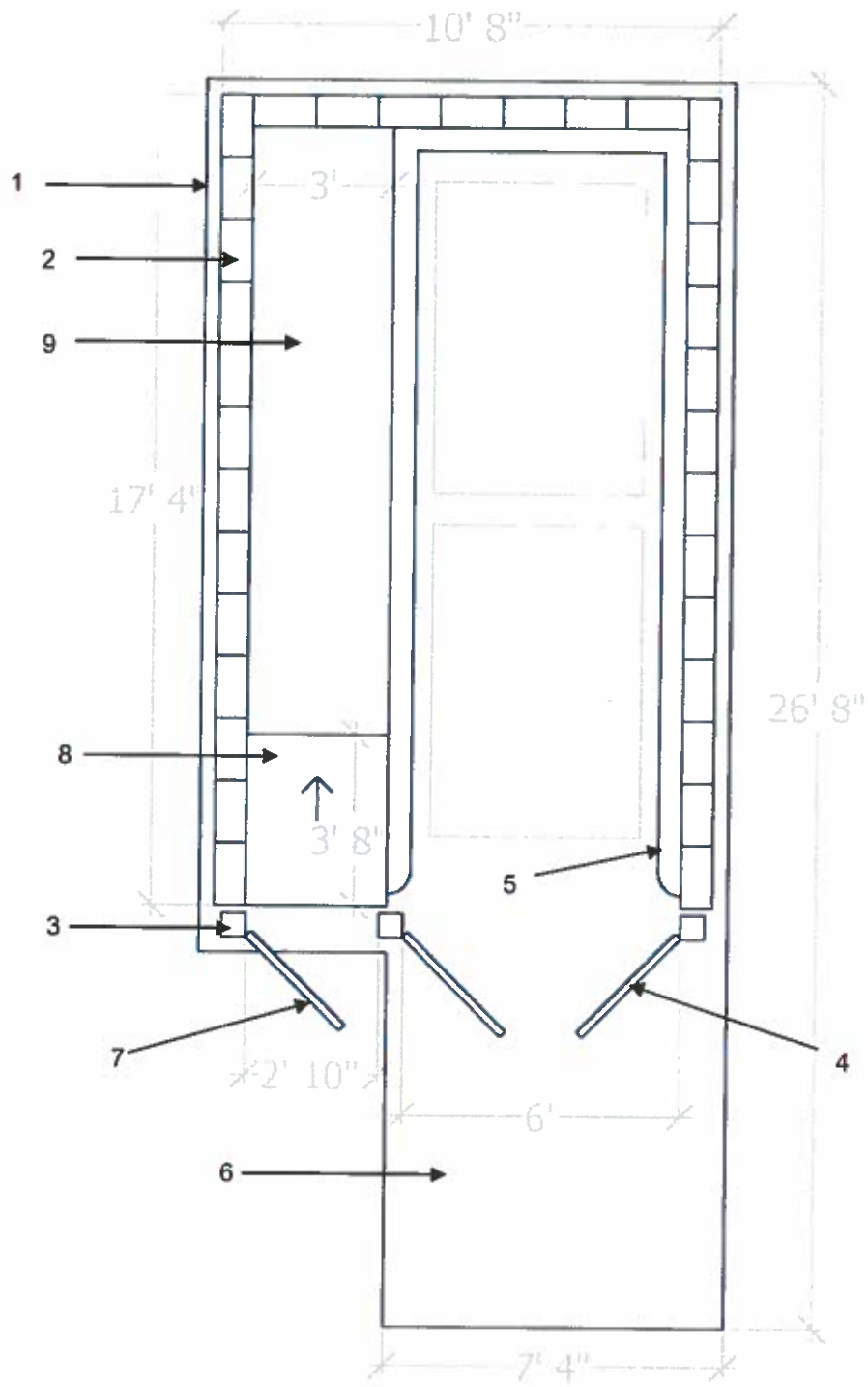
**3. FULL FEATURE ENCLOSURE, GATELESS PEDESTRIAN ENTRANCE, SIDE BYSIDE  
DUMPSTERS**



**4. FULL FEATURE ENCLOSURE, GATELESS PEDESTRIAN ENTRANCE, SIDE BYSIDE  
DUMPSTERS**

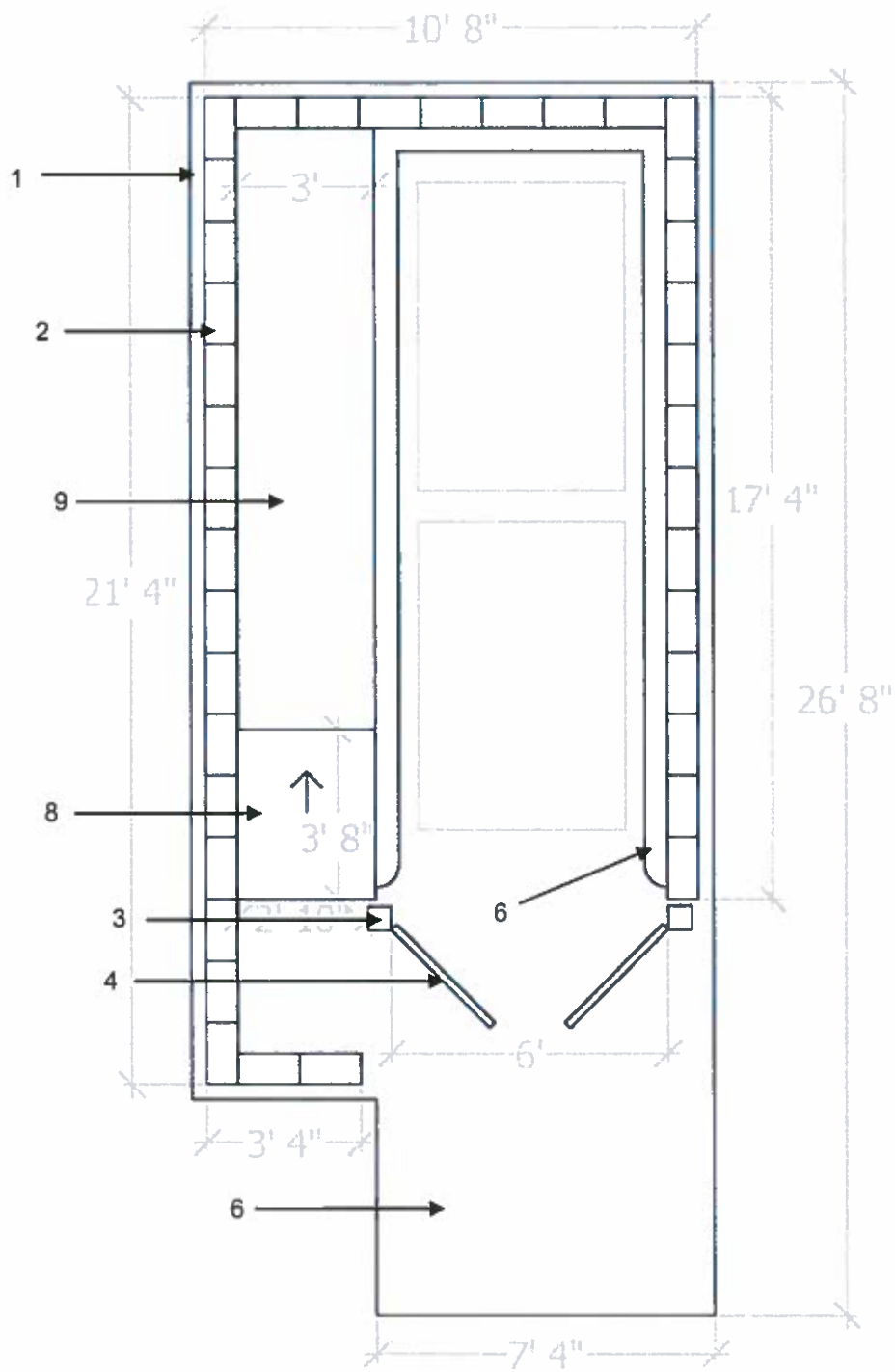


5. FULL FEATURE ENCLOSURE, GATED PEDESTRIAN ENTRANCE TANDEM DUMPSTERS

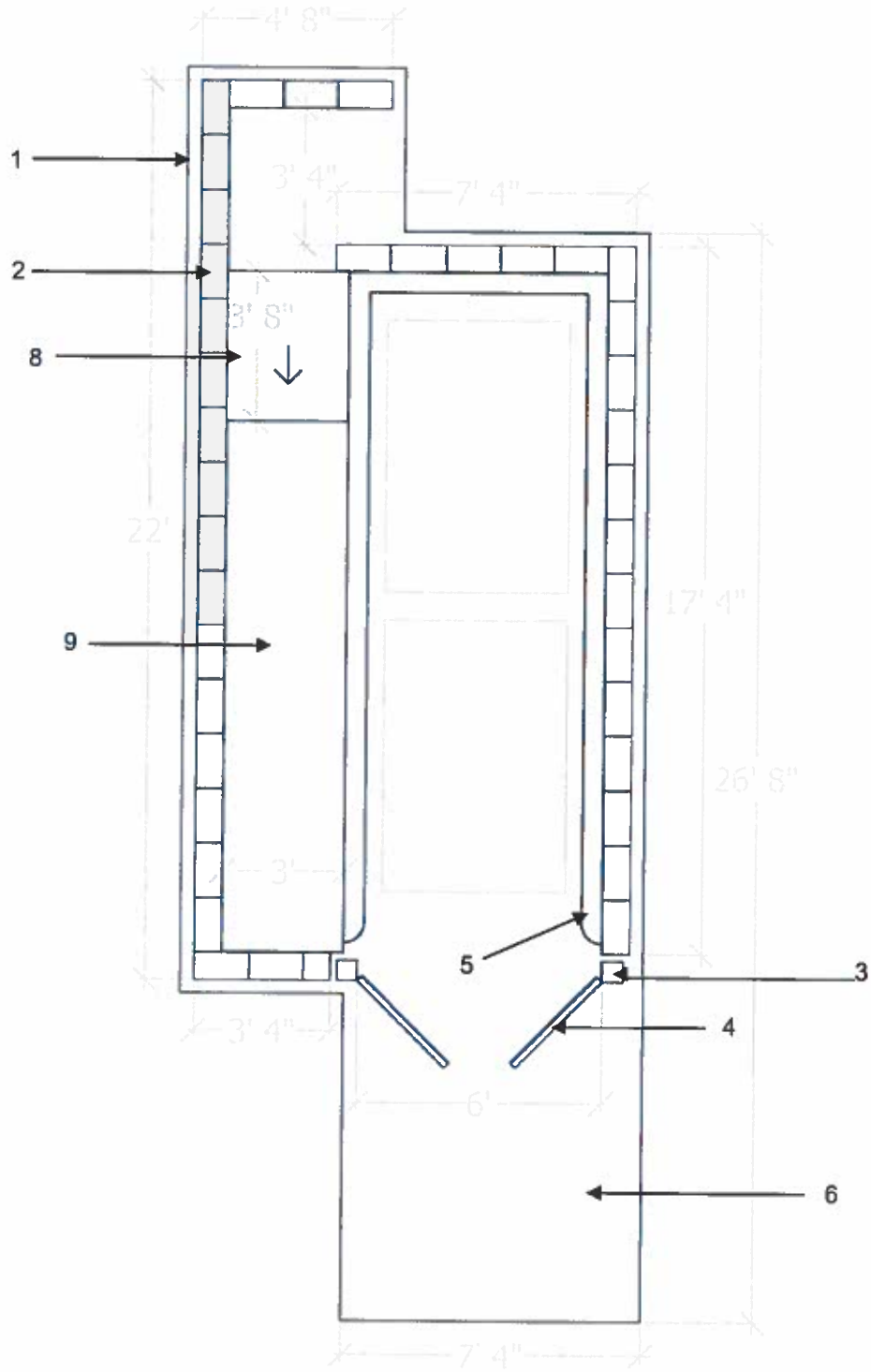




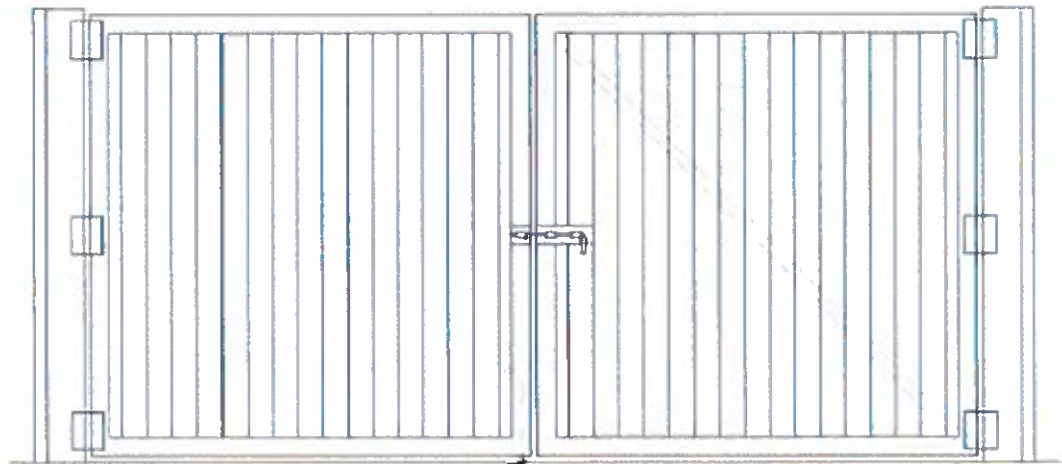
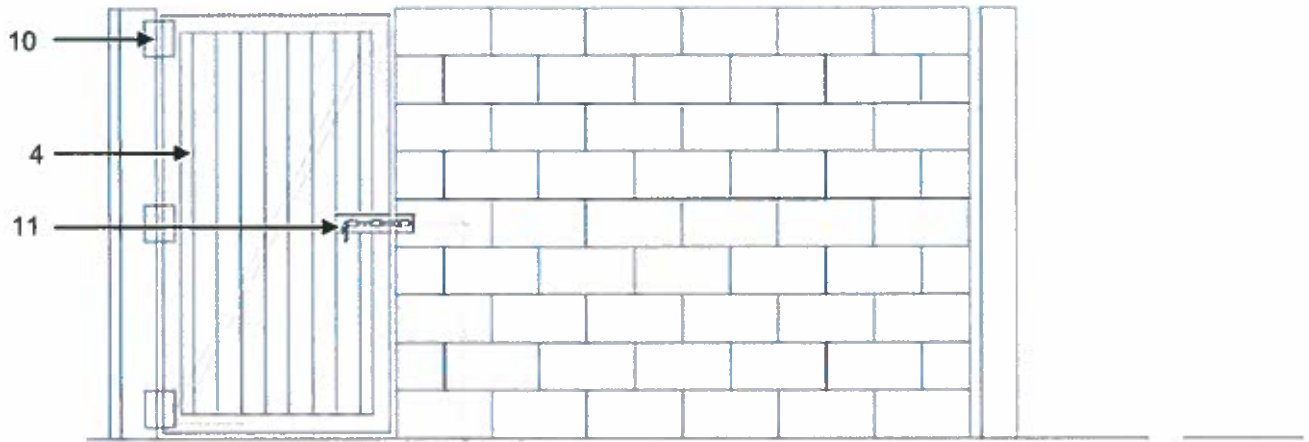
6. FULL FEATURE ENCLOSURE, FRONT GATELESS ENTRANCE, TANDEM DUMPSTERS



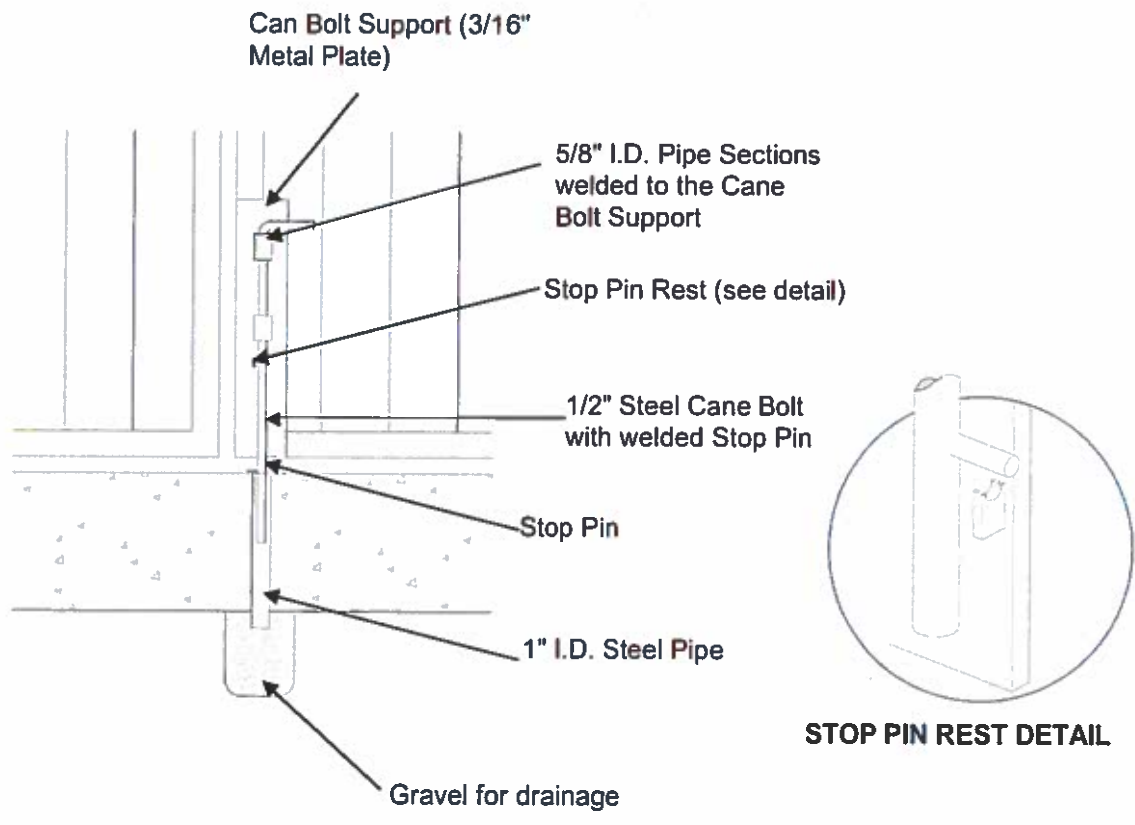
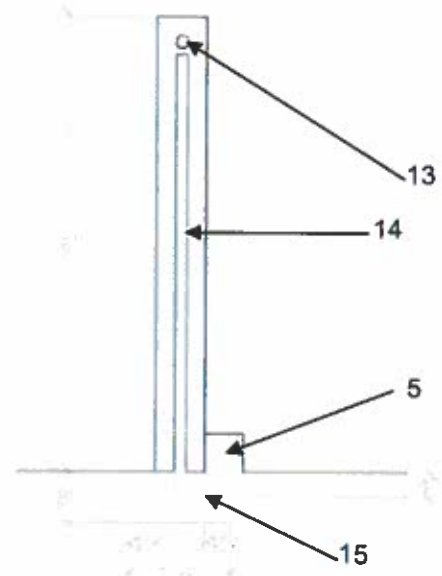
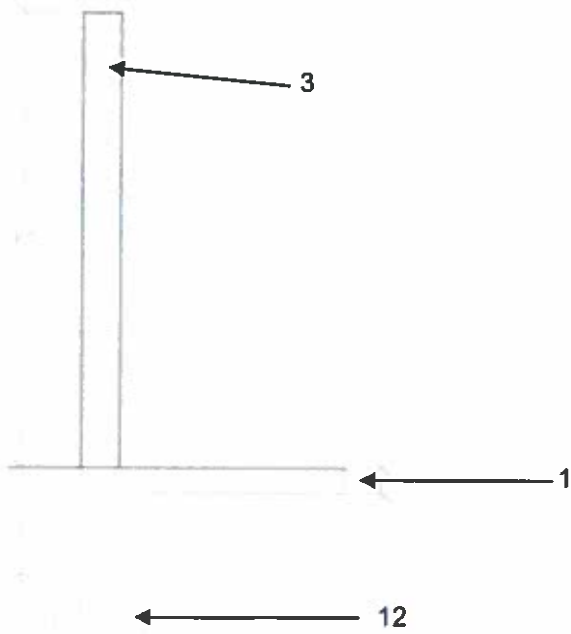
7. FULL FEATURE CLOSURE, REAR GATELESS ENTRANCE, TANDEM DUMPSTER



### 8. GATE DETAIL



16



### OUTSIDE VIEW

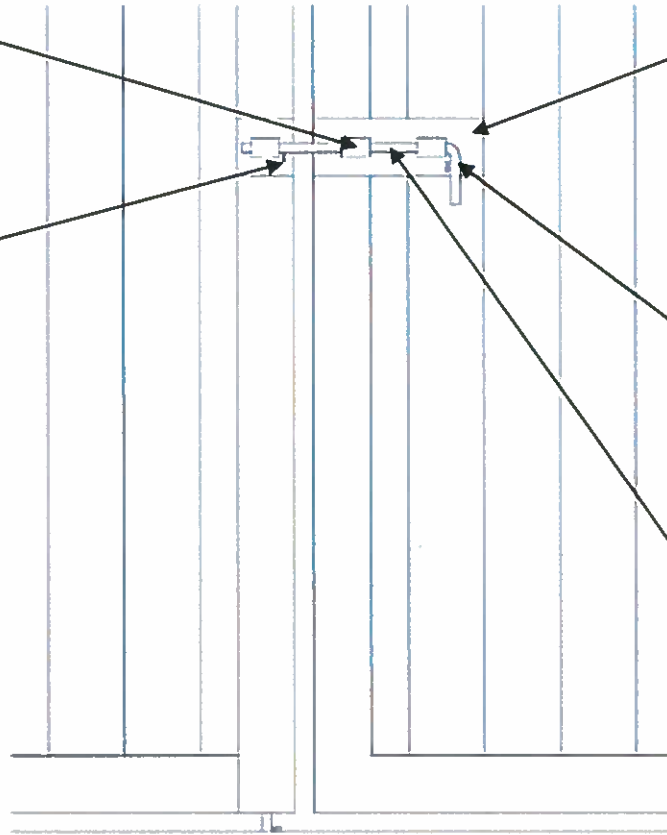
Pipe Sections  
welded to the Slide  
Bolt Support and the  
Frame

Slide Bolt Support  
(3/16" Metal Plate)

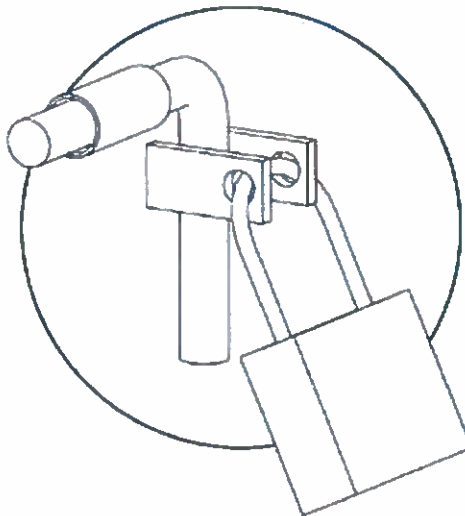
Stop Pin

Lock Hasp (see detail)

5/8" I.D. Pipe Sections  
welded to the Slide Bolt  
Support and the Frame



### LOCK CLASP DETAIL



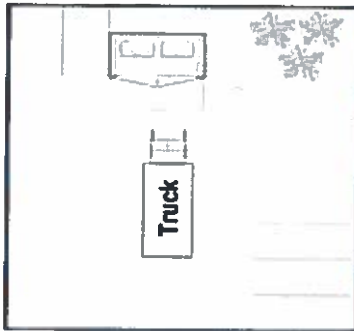
## ENCLOSURE LOCATION & ACCESSIBILITY

All bins/enclosures are required to have direct access for collection trucks. Direct access means the collection truck can drive directly at the bin, and insert the forks into the sides of the bin without having to get out of the truck again (already have to open the gate) to move the bin (See Diagram A). A minimum straight approach of 50 feet is necessary to line up directly with the bin.

Opening/closing gates or fences and locking/unlocking the bin lids are part of the driver responsibility and are included as part of the service provided.

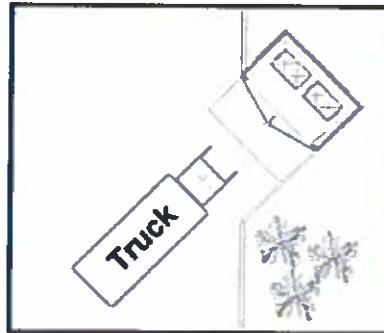
### DIRECT ACCESS

(Preferred)



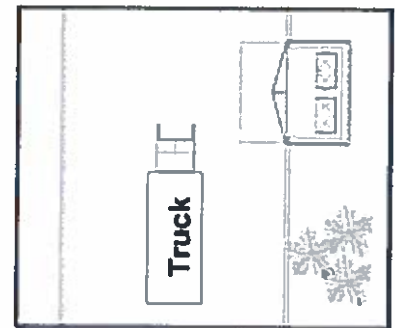
### ANGLED DIRECT ACCESS

(Acceptable w/approval 30 degrees)



### NON-DIRECT ACCESS

(Not Acceptable)

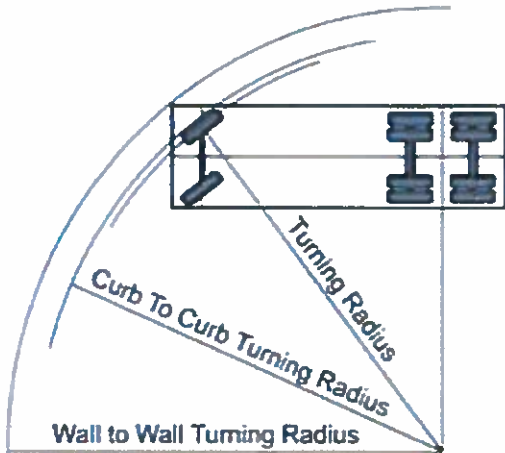


Enclosures with poor or no accessibility or enclosures with atypical orientations are not permitted because the likelihood of driver injury and/or property damage increases. In addition, if a driver is required to move or push the bin for servicing, an additional collection fee may be charged.

- It is difficult and dangerous for a collection truck to back-up. Providing a turnaround or separate exit that allows the truck to move forward rather than backwards is required. Maximum back-up distance is 50 feet for any maneuver and shall be in a straight line;
- Bins shall not be placed in front of fire hydrants and no bin shall be placed within 5 feet of a combustible building wall, opening, or combustible roof eave line; and
- Trash enclosures shall not be installed behind parking spaces.

### TURNING RADIUS REQUIRED FOR ACCESS TO ENCLOSURE

The turning radius shall be adequate for a 3-axle truck. The overall length, including the forks is 36 feet. Minimum outside turning radius is 46.5 feet. Please detail this on your submitted plans.



Dimension(ft)	Description
A 32.84	TURNING RADIUS
B 67.75	CURB TO CURB TURNING DIAMETER
C 74.26	WALL TO WALL TURNING DIAMETER

### HEIGHT CLEARANCE OF THE ENCLOSURE APPROACH

In front of the enclosure, refuse trucks require at least 14 feet of vertical clearance over the entire approach to and from the enclosure to accommodate truck height, and 32 feet high just in front of the enclosure itself or wherever the bin will be serviced to accommodate the truck lifting the bins up to dump the contents.

If the City requires a roof on the enclosure to prevent excess water from entering the waste water system, the roof height inside the enclosure shall be no less than 8 feet.

### DRIVEWAYS

An asphalt or concrete driveway with 50 feet of straight, direct access that leads to and from the enclosures to the bin, is required and should be built in accordance with the City Standard Plans and Specifications and be able to withstand trucks weighing up to 56,000 lbs. Gross Vehicle Weight (GVW).