



City of Redlands: Municipal Utilities & Engineering Department
35 Cajon Street, Suite 15A. Redlands, CA 92373
(909) 798-7698

PMP 2023 Street Resurfacing Project

City Engineer: Goutam Dobey
Phone: (909) 435-7431 (Cell)
Email: gdobey@cityofredlands.org

City Inspector: Daniel Murbarger
Phone: (909) 437-8440 (Cell)
Email: dmurbarger@cityofredlands.org

PROJECT DETAILS

Contractor: Matich Corporation

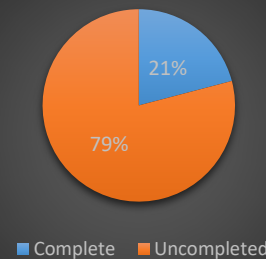
Description: This project will replace approximately twenty-five (25) lane miles of streets, selective replacement of curb and gutter, and striping replacement at various locations throughout the City.

Start Date: 02/20/2024

Anticipated End Date: June 2024

Work Schedule: M-F (7am - 4PM) excluding City recognized holidays.

CONSTRUCTION PROGRESS



Project Updates & Issues

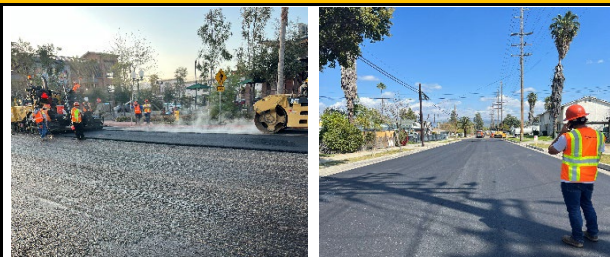
Contractor has completed the replacement of curb and gutter, cold milling operations, potholing, and the lowering of manholes. Asphalt paving operations have begun on cold milled streets.

2 Week Look Ahead

Asphalt paving operations will continue into next week. Once paving is complete, those streets will have manholes raised and begin pavement striping. Streets that will be resurfaced using the pulverization method have been rescheduled to begin construction on 4/2/24.

Current Construction Process

The Contractor is currently on schedule with asphalt paving. Residents should expect minor delays as paving continues. Drivers should adhere to posted signs and use proper precautions. If restricted parking is necessary, "No Parking" signs will be posted 48 hours in advance of construction activities.



Paving Operations

BUDGET TRACKING

Project Cost:	\$	4,381,606.00
Approved Change Orders	\$	-
Total Contract Value	\$	4,381,606.00
Expenditure to Date:	\$	392,046.00
Balance:	\$	3,989,560.00

ADDITIONAL INFORMATION

Register for the distribution list to receive regular updates by sending an email to:
MUEDProjectUpdate@cityofredlands.org

INTERACTIVE CITY CAPITAL IMPROVEMENT PROJECT MAP LINK:

<https://www.cityofredlands.org/node/3710>