

**CITY OF REDLANDS  
TRAFFIC AND PARKING COMMISSION  
REGULAR MEETING AGENDA**

MATT MALOUF, CHAIR

CURTIS DISON, VICE CHAIR  
ANNA JAISWAL, COMMISSIONER  
ERIC SHAMP, COMMISSIONER

MARC TRAN, COMMISSIONER  
CASSIE MACDUFF, COMMISSIONER  
SAANYA SHRIVASTAV, COMMISSIONER

**Thursday, March 24, 2022  
6:00 P.M.**

This will be a teleconference meeting via Zoom. All votes during the teleconferencing meeting via Zoom will be conducted by roll call.

**HOW TO SUBMIT COMMENTS:** Anyone desiring to speak on an agenda item at this meeting may do so during the consideration of that item. Anyone wishing to address the commission/board on a non-agenda item may do so during the Public Comment portion of the meeting. Due to time constraints and the number of persons who may wish to give oral testimony, public comments will be limited to three (3) minutes.

To provide comment through Zoom (on a computer, laptop, or smart device):

Click the "Raise Hand" button and the moderator will unmute you when it is your turn to speak.

To provide comment via audio only (cell phone or landline):

Dial \*9 to "Raise Hand". The moderator will identify you by your area code and last 3 numbers of your telephone number when it is your turn to speak.

**ZOOM MEETING INFORMATION:**

To join via Zoom on a computer, laptop, or smart device:

Please visit [www.zoom.us](http://www.zoom.us), click on Join a Meeting

Enter the Meeting ID 883 1212 0544, then run the Zoom launcher

To join via Zoom with audio only (cell phone or landline):

Dial 1-877-853-5247; Enter the Meeting ID 883 1212 0544

Should the City lose connectivity on Zoom, we will halt the meeting until it can be restored. In the event the City cannot reestablish Zoom connectivity in a reasonable amount of time, the meeting will be adjourned to a future date.

The following information comprises the agenda for a meeting of the Traffic and Parking Commission of the City of Redlands.

*In compliance with the Americans with Disabilities Act, if you need special assistance to participate in this meeting, please contact Goutam K. Dobby of Municipal Utilities/Engineering Department at (909) 798-7584 x2. Notification 48 hours prior to the meeting will enable the City to make reasonable arrangements to ensure accessibility to this meeting. NOTE: Any writings or documents distributed to a majority of the Traffic and Parking Commission regarding an open session agenda item less than 72 hours before this meeting are available at <https://www.cityofredlands.org/traffic-and-parking-commission> or the Municipal Utilities & Engineering Department at 35 Cajon Street, Suite 15A for public inspection or by calling 909-789-7584 x 7.*

*(28 CFR 35.102-35.104 ADA Title II)*

**CITY OF REDLANDS  
TRAFFIC AND PARKING COMMISSION  
REGULAR MEETING AGENDA**

**1. Attendance**

**2. Call to Order**

**3. Approval of Minutes**

A. Minutes of the Regular Meeting of February 23, 2022

**4. Public Comment**

*The public is invited to speak on items not listed on this agenda, but within the jurisdiction of the Commission. However, no general discussion of such items, or action on such items, may be taken. Comments are limited to three minutes.*

**5. Communications**

A. Status of Traffic and Parking Commission budget

B. Status of work orders on items previously recommended by Commission and work orders on items approved by staff that fall within the existing Municipal Code not requiring Commission recommendation or City Council approval

C. Ridge Street resident(s) to present traffic concerns on Ridge Street

D. Discussion about traffic congestion mitigation related to the Redlands Passenger Rail Project

**6. Old Business**

A. Approval of the request to establish a 270 feet 'No-Parking Zone' on Lugonia Avenue at the northwest corner of the Texas Street intersection

**7. Adjournment**

*In compliance with the Americans with Disabilities Act, if you need special assistance to participate in this meeting, please contact Goutam K. Dobby of Municipal Utilities/Engineering Department at (909) 798-7584 x2. Notification 48 hours prior to the meeting will enable the City to make reasonable arrangements to ensure accessibility to this meeting. NOTE: Any writings or documents distributed to a majority of the Traffic and Parking Commission regarding an open session agenda item less than 72 hours before this meeting are available at <https://www.cityofredlands.org/traffic-and-parking-commission> for public inspection or at the Municipal Utilities & Engineering Department, 35 Cajon Street, Suite 15A by calling 909-789-7584 x 7.*

*(28 CFR 35.102-35.104 ADA Title II)*

**CITY OF REDLANDS  
TRAFFIC AND PARKING COMMISSION  
SPECIAL MEETING  
Thursday, February 23, 2022 at 6:00 P.M.**

**MINUTES**

**1. ATTENDANCE**

Roll Call:

**Present**

Commissioners:

Curtis Dison  
Eric Shamp  
Cassie Macduff  
Saanya Shrivastav

Staff:

Johana Silva, MUED  
Corporal Martin Gonzalez, PD  
John Harris, MUED  
Goutam Dobey, MUED

**Absent**

Commissioners:

Matt Malouf  
Anna Jaiswal  
Marc Tran

Guest Consultant:

Alex Tabrizi, RK Engineering Group

**2. CALL TO ORDER**

The regular meeting of the Traffic and Parking Commission was called to order at 6:01 pm by Vice Chairperson Dison.

**3. APPROVAL OF MINUTES**

Upon review of the meeting minutes of the Traffic and Parking Commission's last meeting on September 23, 2021. **A motion was made by Commissioner Shamp and seconded by Commissioner Dison to approve the minutes as presented and carried.**

**4. PUBLIC COMMENT**

No non-agenda related public comments were made. Comments related to specific agenda items are incorporated into the item discussion.

**5. COMMUNICATIONS**

**5A. *Status of work orders on items previously recommended by Commission and approved by City Council***

Ms. Silva presented a slide and provided a brief overview of the status of work orders that were previously recommended by the Commission and approved by City Council.

**5B. *Status of work orders on items approved by staff that fall within the existing Municipal Code not requiring Commission recommendation or City Council approval***

A slide was presented providing a brief overview of the status of work orders which do not require Commission recommendation, and have been approved and completed by city staff in accordance with the Redlands Municipal Code. Discussion ensued regarding in-road pedestrian crossing signs.

**5C. *Discussion of Traffic and Parking Commission budget***

Mr. Harris gave an overview of the annual commission budget and summarized three options on how applications can be handled according to the annual budget. The first option consisted of reallocating funds from under budget projects or requesting more funding from City Council if the current budget is exhausted. The second option consisted of reviewing applications in the first month of each quarter for construction in the second quarter. The third option is for Staff to prioritize the applications. Discussion ensued regarding the budget with the general consensus of applying option two with option one.

**5D. *Commission Annual Presentation to City Council***

Vice Chair Dison stated as in previous years, City commissions and committees provide annual updates to the City Council. The Commission was asked to determine who would present and an alternative presenter. It was determined that Chairperson Shamp would present to City Council on behalf of the Commission with Vice Chairperson Curtis Dison as an alternate. A tentative date of May 3, 2022 was set for the commission to report to Council.

**6. NEW BUSINESS**

**6A. *Request Approval of the 2021 Engineering and Traffic Survey to update citywide speed limits***

Ms. Silva stated the City routinely prepares Engineering and Traffic Surveys (E&TS) to justify posted speed limits throughout the City and to allow the Police Department to enforce the speed limits using an electronic device. Discussion ensued regarding the recommended increases in the speed limits, consistency of speed limits within the entirety of the street and criteria to determine speed limits. Mr. Tabrizi from RK Engineering Group explained the methodology used for determining the speed limits. Cpl. Gonzalez clarified the lidar/radar equipment used for speed enforcement and warned of possible increases in violations if the 85th percentile methodology is not followed. Mr. Harris stated that citations issued are typically thrown out in court if the methodology is not followed. In addition, lowering a speed limit is not an appropriate traffic safety measure for vehicular and pedestrian safety and described a local sample

of traffic calming. Commissioner Shamp asked how the increase in speed limits has been checked for consistency against the Sustainable Mobility Plan and other City plans. Mr. Harris suggested additional time for the commission to review the report and a comprehensive discussion in an upcoming meeting to discuss the justification for the recommended speed limit changes. **A motion was made by Commissioner MacDuff and seconded by Commissioner Dison to continue the item at an upcoming commission meeting. By roll call vote of 4-0, the motion carried unanimously.**

**6B. *Approval of the request to establish a midblock crosswalk on Central Avenue between Church Street and Citrus Avenue***

Ms. Silva presented Staff's recommendation of a midblock crosswalk on Central Avenue between Church Street and Citrus Avenue. **A motion was made by Commissioner MacDuff and seconded by Commissioner Shamp to recommend to City Council the request to establish a midblock crosswalk on Central Avenue between Church Street and Citrus Avenue. By roll call vote of 4-0, the motion carried unanimously.**

**6C. *Denial of the request to allow residential parking permits to the current 2-hour parking zone along the east side of Cajon Street between Clark Street and Fern Avenue***

Ms. Silva presented Staff's recommendation to deny the request to allow residential parking permits to the current 2-hour parking zone along the east side of Cajon Street between Clark Street and Fern Avenue. Ms. Silva explained that residents of Cajon Street have difficulty parking on-street due to the time restricted parking. Mr. Miller, local business owner, addressed the commission on how allowing residential parking permits would negatively affect his business due to the limited number of parking spaces for staff and customers. Discussion ensued regarding the 1955 Ordinance No. 1000 that states the residential parking space requirements and the Preferential Parking Zone section of the Municipal Code that permits the issuance of three residential parking permits to any one residence and an additional two visitor preferential parking permits. Mr. Harris stated that the discussed area can be included in a downtown parking study for recommendations by a consultant. **A motion was made by Commissioner MacDuff and seconded by Commissioner Dison for the denial of the request to allow residential parking permits to the current 2-hour parking zone along the east side of Cajon Street between Clark Street and Fern Avenue. By roll call vote of 4-0, the motion carried unanimously.**

**6D. *Approval of the request to establish a 270 feet 'No-Parking Zone' on Lugonia Avenue at the northwest corner of the Texas Street intersection***

Ms. Silva presented staff's recommendation of a 270 feet 'No-Parking Zone' on Lugonia Avenue at the northwest corner of the Texas Street intersection. Discussion ensued regarding possible confusion by motorists of the merging lanes on westbound

Lugonia Avenue, adding additional merging ahead signs, delineating the parking area with striping and a possible right turn only lane on westbound Lugonia Avenue, east of Texas.

**A motion was made by Commissioner Dison to recommend to City Council the installation of a 270 feet 'No-Parking Zone' on Lugonia Avenue at the northwest corner of the Texas Street intersection. Motion not seconded; motion failed.**

**A motion was made by Commissioner MacDuff and seconded by Commissioner Shamp to table the item to allow Staff to propose alternate solutions to address merging confusion by motorists on westbound Lugonia Avenue. By roll call vote of 4-0, the motion carried unanimously.**

## **7. ADJOURNMENT**

The meeting was adjourned by Vice Chairperson Dison at 7:52 pm.

DRAFT

**AGENDA ITEM 5A**



**TRAFFIC & PARKING COMMISSION  
EXPENDITURE TRACKING WORKSHEET**

3/7/2022

ITEM	TPC MEETING	DESCRIPTION	STATUS	AVAILABLE BUDGET	UNBUDGETED REVENUE	EXPENDITURE/COST ESTIMATE	REMAINING BUDGET	COMMENTS
				\$ 100,000.00				FY 21/22 MUED BUDGET ALLOCATION FOR APPROVED TPC PROJECTS
1	9/24/2020	CHURCH STREET MID-BLOCK CROSSWALK (LUGONIA AVENUE-BROCKTON AVENUE)	COMPLETE					
2	3/25/2021	EUREKA STREET/BROOKSIDE AVENUE RECONFIGURATION	COMPLETE					
3	3/25/2021	EUREKA STREET MID-BLOCK CROSSWALK (VINE STREET-OLIVE AVENUE)	COMPLETE	\$ 100,000.00	\$ -	\$ 60,643.81	\$ 39,356.19	
4	5/27/2021	EUREKA STREET NO PARKING ZONE - SOUTH OF BROOKSIDE AVENUE	COMPLETE					
5	5/27/2021	MARION ROAD/5 <sup>TH</sup> STREET CROSSWALK	PARTIALLY COMPLETE	\$ 39,356.19	\$ -	\$ 30,170.80	\$ 9,185.39	
6	5/27/2021	WABASH AVENUE/HIGHLAND AVENUE CROSSWALK	PENDING HSIP CYCLE 10	\$ 9,185.39	\$ -	\$ -	\$ 9,185.39	NO BUDGET IMPACT - ALLOCATED TO GRANT FUNDED PROJECT
7	9/23/2021	9 <sup>TH</sup> STREET NO PARKING ZONE (CENTRAL AVENUE-STUART AVENUE)	COMPLETE	\$ 9,185.39	\$ -	\$ -	\$ 9,185.39	NO BUDGET IMPACT - COMPLETED IN-HOUSE
8	2/23/2022	CENTRAL AVENUE MID-BLOCK CROSSWALK (CHURCH STREET-CITRUS AVENUE)	PENDING CC APPROVAL	\$ 9,185.39	\$ 17,456.00	\$ 34,911.80	\$ (8,270.41)	
9	3/24/2022	LUGONIA AVENUE NO PARKING ZONE - WEST OF TEXAS STREET		\$ (8,270.41)	\$ -	\$ -	\$ (8,270.41)	NO BUDGET IMPACT - COMPLETED IN-HOUSE

# AGENDA ITEM 5B

## Work Order Status as of March 8, 2022

### Traffic and Parking Commission (TPC) Approved Items Work Order Status

Item	TPC Meeting	Description of Request	Recommended by TPC?	City Council Meeting	Approved by City Council?	Work Order Issued	Work Order Status
1	5/27/2021	Install a crosswalk on Fifth Street at Marion Road	Yes	12/7/2021	Yes	Pending	Pending ADA ramp and sidewalk installation in Sidewalk Repair Project
2	5/27/2021	Install a crosswalk on Wabash Avenue at Highland Avenue	Yes	N/A	N/A	Pending	Allocated to HSIP Cycle 10 project
3	2/23/2022	Install a midblock crosswalk on Central Avenue between Church Street and Citrus Avenue	Yes	4/19/2022	N/A	N/A	Pending City Council approval

### Status of Work Orders Approved by Staff

Item	Description of Request	Work Order Issued	Work Status
1	Install in-road pedestrian crossing sign on the crosswalk on Cypress Avenue at Monterey Street	1/5/2022	Complete
2	Install in-road pedestrian crossing sign on the crosswalk on Citrus Avenue at Central Avenue	1/5/2022	Complete
3	Install five speed limits sign on Independence Avenue between Dearborn Street and Wabash Avenue	2/9/2022	Complete



**REQUEST FOR COMMISSION ACTION**

**SUBJECT: REQUEST TO ALLOW RIDGE STREET RESIDENT(S) TO PRESENT TRAFFIC CONCERNS ON RIDGE STREET**

**STAFF RECOMMENDATION:**

Staff recommends to allow the resident(s) to discuss traffic concerns on Ridge Street.

**DISCUSSION:**

Residents expressed safety concerns about speed and truck traffic on Ridge Street. Staff met with the resident at the location to discuss the concerns. Mr. Snow, resident, claimed that as Ridge Street is a small street with no sidewalks and a downhill slope, the street is dangerous for pedestrians.

Mr. Snow suggested a stop sign at the Pacific Street and Ridge Street. Staff conducted a traffic study and determined that the stop sign on Pacific Street at Ridge Street is warranted due to vertical and horizontal sight distance issues. During the January 28, 2021 Traffic and Parking Commission meeting, Staff recommended a stop sign at Pacific Street at the intersection of Ridge Street which was approved by the commission.

Staff continued conversations with the resident who requested a change in speed limit to 20 mph. Staff determined an additional traffic study should be conducted. Currently, the speed limit on Ridge Street is 25 mph which is based on prima facie speed limit for residential streets. The current speed is consistent with the speed analysis conducted by staff. The traffic analysis shows no significant collision history or speeding occurring on Ridge Street. As a result of this survey, a change to the requested speed limit of 20 MPH is not warranted and cannot be enforced under California law and therefore cannot be recommended.

As the street width of Ridge Street north of Pacific Street is under 20 feet and the street grade exceeds 6%, traditional traffic calming devices are not an option. Ridge Street not does meet the physical criteria set by the Policy for the Installation of Speed Humps on City Streets. The policy requires 67% of motorists on the street must exceed the 25 mph speed limit by a minimum of 10 mph. In addition, the maximum grade of the street should not exceed 6% for the entire length of the street.

In order to alleviate the issues described by the resident, Staff installed two 25 mph speed limit signs, a road narrow sign and chevron signs at the sharp curve in the road between Pacific Street and Center Street. In additional, to address the truck traffic concern on Ridge Street, Staff installed no-trucks signs at the Ridge Street and Center Street intersection

and the Ridge Street and Sunset Drive intersection.

As the multiple traffic analyzes conducted by Staff did not show significant speeding or collision history, Staff is not recommending additional improvement to Ridge Street at this time.

**ATTACHMENTS:**

- A. Location Map
- B. Request Letter
- C. Traffic Counts
- D. Collision History

Prepared by:

---

**JOHANA SILVA**  
Assistant Engineer

Reviewed by:

---

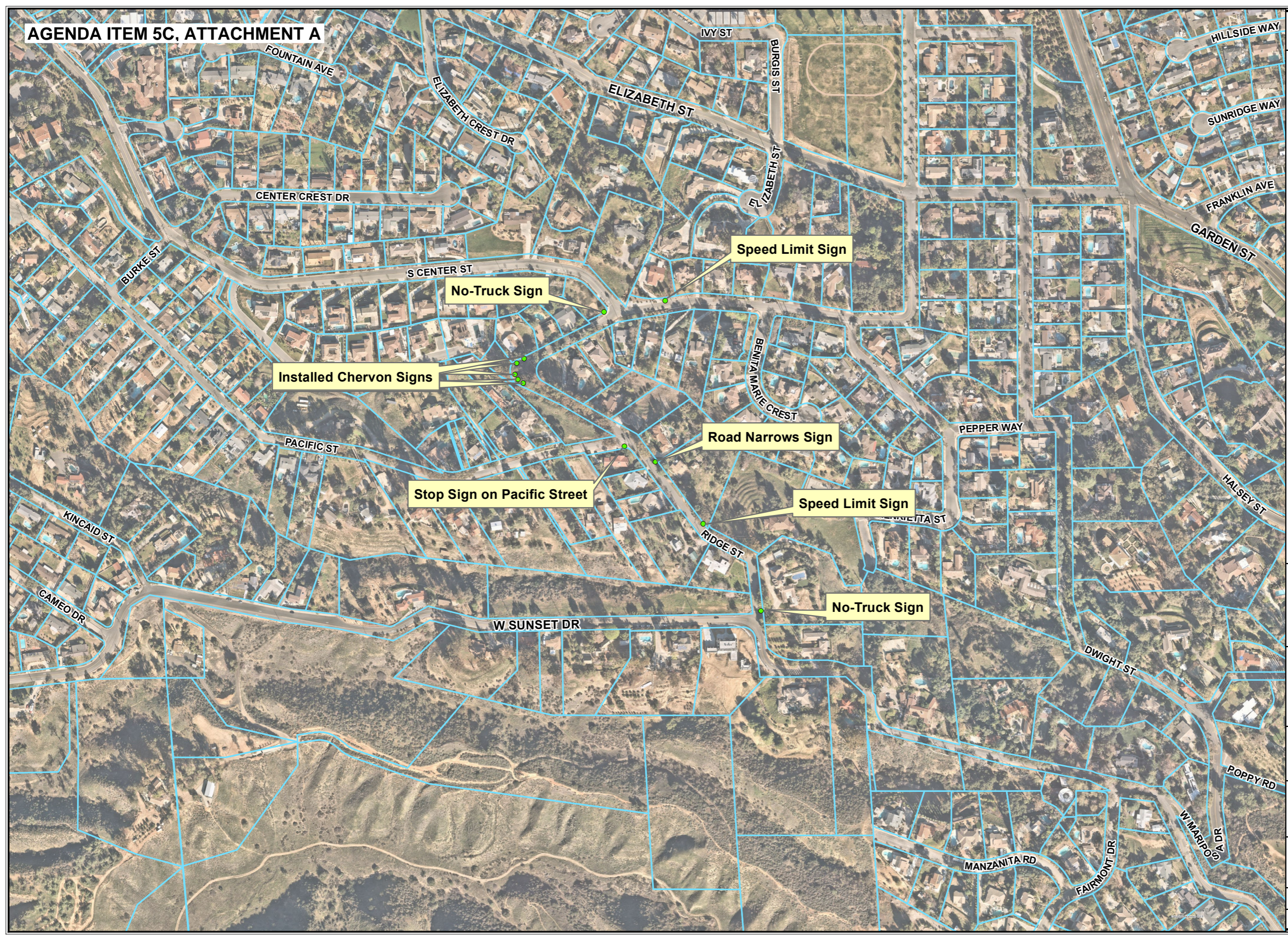
**GOUTAM K. DOBEY**  
Engineering Manager

Reviewed by:

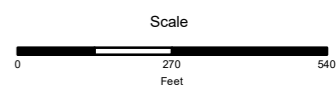
---

**JOHN R. HARRIS**  
Municipal Utilities and Engineering Director

Ridge Street improvements approved by Staff



This map was produced by the City of Redlands, Geographic Information System. The City of Redlands assumes no warranty or legal responsibility for the information contained on this map. The data used to generate this map is dynamic in nature, therefore the information shown may or may not be the most current.



March 17, 2022

OneStop.mxd



**City of Redlands  
Traffic and Parking Commission  
Request for Agenda Item**

PLEASE PRINT OR TYPE

Steve Snow

Name

Address

Phone Number

E-mail

Date

**REQUEST**

Help in reducing speed and big truck traffic on Ridge Street

**LOCATION OF REQUEST**

Ridge Street

**REASON FOR REQUEST**

See attached

Please use additional sheets of paper if necessary. You may also attach any diagrams, sketches, petitions, or other items you feel may be helpful to the Traffic and Parking Commission in making a recommendation to the City Council on your request.

**SIGNATURE OF APPLICANT:**

**RETURN TO:**

City of Redlands  
Municipal Utilities and Engineering Department (Traffic and Parking Commission)  
P.O. Box 3005  
Redlands, CA 92373

Note: The Traffic and Parking Commission meets the fourth Thursday of each odd numbered month at 6:00 p.m. in Redlands City Council Chambers, Civic Center, 35 Cajon Street, Redlands, CA.

12/1/2021

Traffic Commission

My name is Steve Snow. I live at [REDACTED] have worked with the Police Department and the Engineering Department to reduce speed and truck traffic on Ridge Street. Ridge Street was on your agenda January 28th to approve a stop sign on Pacific Street where it intersects Ridge. The subject of speed was discussed but quickly dismissed when traffic monitoring data was introduced. The data indicated that 50 vehicles were tracked in a 48-hour period. The average speed was 23 mph and the highest was 30. I was online listening and knew this data was inaccurate. I have a security camera that captures many things, including traffic, and my own analysis yielded a much different result. Director Harris said that it was this information that helped him procure newer, radio-controlled devices. I am requesting that the Ridge Street speed and large truck behavior be reviewed again given the updated results. Director Harris provided me with the data which was captured in early October and here is a summary.

- More than 3,000 vehicles were tracked in the 8-9 day period!!!!
- 64% or 2,000+ were traveling 20 mph or more
- 35% or 1,100+ were traveling 25 mph or more (the current posted speed limit)
- 12% or 380+ were traveling 30 mph or more (this is the 85<sup>th</sup> percentile speed which is why we now have a 25 mph speed limit)
- 2% or 60+ were traveling 35 mph or more

\*A few days during the study tree trimming was going on with warning signs posted which caused people to slow down – I believe this impacted some of the data.

### **400+ vehicles are traveling 30 mph or more and these are the most concerning**

Ridge Street has clearly become a popular thoroughfare and speeds present a growing threat to pedestrians. It is very popular with walkers, baby strollers, and bikers. The city has installed a “road narrows” sign and arrows at the hairpin turn and we are grateful for that. I am disappointed that nothing more has been done. The engineering department considers the matter closed hence my request for placement on your agenda. I and other residents believe we still have a problem and are looking for more creative solutions other than the placement of a sign.

Here are some points that I would like the traffic commission to consider.

- Ridge Street between Pacific and the hairpin turn is roughly 18' across. This is half the width of other streets with a similar 25 mph speed limit. For example, Center Street intersects Ridge, is twice as wide (roughly 36') and has the same speed limit. The distance to the center line is 18'. You can argue that Ridge is basically a one lane road at its narrowest. Two cars cannot pass safely without coming to a crawl and a car and big rig (yes, we have them) cannot pass each other at all. The car must back up and yield. There are numerous streets in Redlands with a 25 mph speed limit and are much wider than Ridge.

- I understand the city uses the 85<sup>th</sup> percentile rule to set speed limits but shouldn't some common sense be used when setting the limit? It isn't black and white. Why would an 18' wide street be subject to the same criteria as a street twice as wide? By the way, there are no sidewalks or exit areas on Ridge for pedestrians unlike other streets with a similar speed limit. There is a growing body of research that discusses the problem with the 85<sup>th</sup> percentile rule. The National Association of City Transportation Officials says "this method forces engineers to adjust speed limits to match observed driver behavior instead of bringing driver behavior in line with safety goals and the law. When it comes to safety, this method is designed to fail."
- 25 mph is too fast for this narrow street. It should be no more than 15 mph in my opinion.
- In an email to me, Director Harris agrees that "signs don't work". Can we consider other methods like rumble strips or rumble bumps (basically small, round raised areas)? I agree that a full-blown speed bump is not required, but something less intrusive could help in slowing vehicles as they approach the narrow area – especially on the downhill side.
- Additional steps could include painting a center line on Ridge or painting words like "slow" or the posted speed limit on the street.
- Finally, we still have a problem with big rigs on Ridge. I have numerous photos that have been shared with police and other city officials. Engineering did install a sign with a "no truck image" but it is ineffective. I have seen larger signs in other communities that spell out the type of truck that is prohibited (weight, axle count, etc. ) along with words like the road is very narrow. I think this would help. You can barely see the current sign.

Based on the above, placement on an upcoming Traffic Commission agenda makes sense. I would be happy to share photo and video evidence if helpful.

Thanks for listening.

Steve Snow




Mark Monsma


John Gilner


Rich Entzminger

# City of REDLANDS

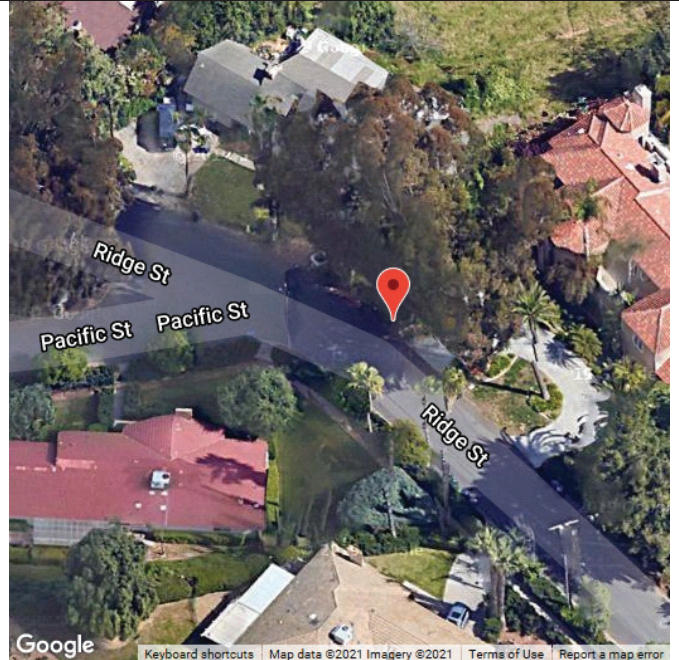
## MUNICIPAL UTILITIES AND ENGINEERING DEPARTMENT TRAFFIC ANALYSIS

### SPEED DATA ANALYSIS

#### Location



Latitude: 34.028293  
Longitude: -117.167662



#### Analysis Time Period



Start	End
9/29/2021 8:49 AM	10/10/2021 3:12 PM

#### Vehicles Analyzed



3,227



22

#### 85th Percentile Speed

#### Speed Limit



25



29





Site Code: Ridge St at Pacific St  
 Latitude: 34.028293  
 Longitude: -117.167662

Start Date: 9/29/2021  
 End Date: 10/10/2021

**MUNICIPAL UTILITIES AND ENGINEERING DEPARTMENT  
 TRAFFIC ANALYSIS**

Combined Lanes 9/29/2021 to 10/10/2021

**Peak Analysis**

Classes Excluded From Peaks: None

Date	AM Peak	Hour Volume	Highest Interval Time	Highest Interval Volume	Peak Hour Factor	Pm Peak	Hour Volume	Highest Interval Time	Highest Interval Volume	Peak Hour Factor
9/29/2021	8:43 AM	25	8:50 AM	14	0.45	2:52 PM	32	3:36 PM	12	0.67
9/30/2021	8:56 AM	45	9:19 AM	15	0.75	3:00 PM	60	3:15 PM	23	0.65
10/1/2021	7:26 AM	43	8:08 AM	14	0.77	3:49 PM	38	4:33 PM	13	0.73
10/2/2021	10:08 AM	23	10:51 AM	8	0.72	12:27 PM	30	1:11 PM	12	0.63
10/3/2021	10:32 AM	27	10:32 AM	9	0.75	5:00 PM	24	5:05 PM	8	0.75
10/4/2021	6:52 AM	28	7:29 AM	12	0.58	4:48 PM	41	5:16 PM	14	0.73
10/5/2021	7:07 AM	27	7:28 AM	10	0.68	3:09 PM	40	3:40 PM	14	0.71
10/6/2021	7:41 AM	25	8:24 AM	8	0.78	1:52 PM	31	2:07 PM	11	0.70
10/7/2021	8:38 AM	27	8:47 AM	10	0.68	1:20 PM	32	1:46 PM	13	0.62
10/8/2021	10:54 AM	23	11:34 AM	10	0.58	1:17 PM	22	1:55 PM	9	0.61
10/9/2021	10:32 AM	14	10:39 AM	6	0.58	1:24 PM	22	1:24 PM	8	0.69
10/10/2021	10:58 AM	21	11:34 AM	10	0.53	12:27 PM	17	12:27 PM	6	0.71

**Percentile Speeds**

Percentile	5th	15th	35th	50th	65th	85th	95th
Speed - MPH	9.8	14.8	19.2	22.3	24.8	28.5	31.6

**AADT**

Date	Lane	AADT
9/29/2021	Northwest, Lane 1	117
9/29/2021	Southeast, Lane 2	130
9/29/2021	Day Total	247
9/30/2021	Northwest, Lane 1	218
9/30/2021	Southeast, Lane 2	206
9/30/2021	Day Total	424
10/1/2021	Northwest, Lane 1	172
10/1/2021	Southeast, Lane 2	186
10/1/2021	Day Total	358
10/2/2021	Northwest, Lane 1	129
10/2/2021	Southeast, Lane 2	145
10/2/2021	Day Total	274
10/3/2021	Northwest, Lane 1	112
10/3/2021	Southeast, Lane 2	116
10/3/2021	Day Total	228
10/4/2021	Northwest, Lane 1	163
10/4/2021	Southeast, Lane 2	172
10/4/2021	Day Total	335
10/5/2021	Northwest, Lane 1	136
10/5/2021	Southeast, Lane 2	159
10/5/2021	Day Total	295
10/6/2021	Northwest, Lane 1	120
10/6/2021	Southeast, Lane 2	147
10/6/2021	Day Total	267
10/7/2021	Northwest, Lane 1	116
10/7/2021	Southeast, Lane 2	183
10/7/2021	Day Total	299



Site Code: Ridge St at Pacific St  
Latitude: 34.028293  
Longitude: -117.167662

Start Date: 9/29/2021  
End Date: 10/10/2021

**MUNICIPAL UTILITIES AND ENGINEERING DEPARTMENT**  
**TRAFFIC ANALYSIS**

Date	Lane	AADT
10/8/2021	Northwest, Lane 1	72
10/8/2021	Southeast, Lane 2	135
10/8/2021	Day Total	207
10/9/2021	Northwest, Lane 1	78
10/9/2021	Southeast, Lane 2	111
10/9/2021	Day Total	189
10/10/2021	Northwest, Lane 1	47
10/10/2021	Southeast, Lane 2	59
10/10/2021	Day Total	106
Total		3229
Average		269



Site Code: Ridge St at Pacific St  
 Latitude: 34.028293  
 Longitude: -117.167662

Start Date: 9/29/2021  
 End Date: 10/10/2021

**MUNICIPAL UTILITIES AND ENGINEERING DEPARTMENT**  
**TRAFFIC ANALYSIS**

Time	9/27/21 Mon	9/28/21 Tue	9/29/21 Wed	9/30/21 Thu	10/1/21 Fri	10/2/21 Sat	10/3/21 Sun	Week Average
12:00 AM	*	*	*	1	0	1	2	1
01:00	*	*	*	2	0	2	2	2
02:00	*	*	*	0	0	2	0	0
03:00	*	*	*	0	2	1	1	1
04:00	*	*	*	3	2	1	0	2
05:00	*	*	*	1	3	0	0	1
06:00	*	*	*	20	11	6	6	11
07:00	*	*	*	27	28	9	5	17
08:00	*	*	11	38	29	9	10	19
09:00	*	*	21	43	23	17	8	22
10:00	*	*	17	16	15	19	23	18
11:00	*	*	19	21	23	19	24	21
12:00 PM	*	*	14	27	27	17	13	20
01:00	*	*	25	30	31	25	11	24
02:00	*	*	17	18	28	27	21	22
03:00	*	*	30	60	27	12	15	29
04:00	*	*	18	27	34	15	17	22
05:00	*	*	26	31	16	21	24	24
06:00	*	*	21	22	20	22	15	20
07:00	*	*	10	17	17	11	15	14
08:00	*	*	11	10	9	13	8	10
09:00	*	*	4	4	7	14	4	7
10:00	*	*	1	4	2	4	1	2
11:00	*	*	2	2	4	7	3	4
Total	0	0	247	424	358	274	228	313
Percent	0.0%	0.0%	78.9%	135.5%	114.4%	87.5%	72.8%	100.0%
AM Peak			09:00	09:00	08:00	10:00	11:00	09:00
Volume			21	43	29	19	24	22
PM Peak			03:00	03:00	04:00	02:00	05:00	03:00
Volume			30	60	34	27	24	29



Site Code: Ridge St at Pacific St  
 Latitude: 34.028293  
 Longitude: -117.167662

Start Date: 9/29/2021  
 End Date: 10/10/2021

**MUNICIPAL UTILITIES AND ENGINEERING DEPARTMENT**  
**TRAFFIC ANALYSIS**

Time	10/4/21 Mon	10/5/21 Tue	10/6/21 Wed	10/7/21 Thu	10/8/21 Fri	10/9/21 Sat	10/10/21 Sun	Week Average
12:00 AM	1	0	1	0	1	5	5	2
01:00	0	2	0	2	0	0	2	1
02:00	0	0	0	0	0	0	0	0
03:00	0	3	0	1	0	0	0	1
04:00	1	2	0	0	0	1	0	1
05:00	0	4	7	0	2	2	1	2
06:00	10	7	9	9	4	0	2	6
07:00	24	23	19	17	18	6	4	16
08:00	9	11	21	22	10	11	7	13
09:00	20	14	16	20	10	7	9	14
10:00	21	14	16	22	19	11	13	17
11:00	24	14	20	22	22	13	21	19
12:00 PM	22	21	14	27	12	14	13	18
01:00	25	25	23	23	17	16	12	20
02:00	27	27	30	24	12	20	13	22
03:00	31	34	22	27	16	12	4	21
04:00	24	25	13	28	11	16	*	20
05:00	38	17	17	15	15	14	*	19
06:00	19	22	14	25	6	15	*	17
07:00	20	11	10	8	11	10	*	12
08:00	11	8	7	4	8	5	*	7
09:00	2	9	5	2	7	3	*	5
10:00	4	2	2	1	5	7	*	4
11:00	2	0	1	0	1	1	*	1
Total	335	295	267	299	207	189	106	258
Percent	129.8%	114.3%	103.5%	115.9%	80.2%	73.3%	41.1%	100.0%
AM Peak	07:00	07:00	08:00	08:00	11:00	11:00	11:00	11:00
Volume	24	23	21	22	22	13	21	19
PM Peak	05:00	03:00	02:00	04:00	01:00	02:00	12:00 PM	02:00
Volume	38	34	30	28	17	20	13	22

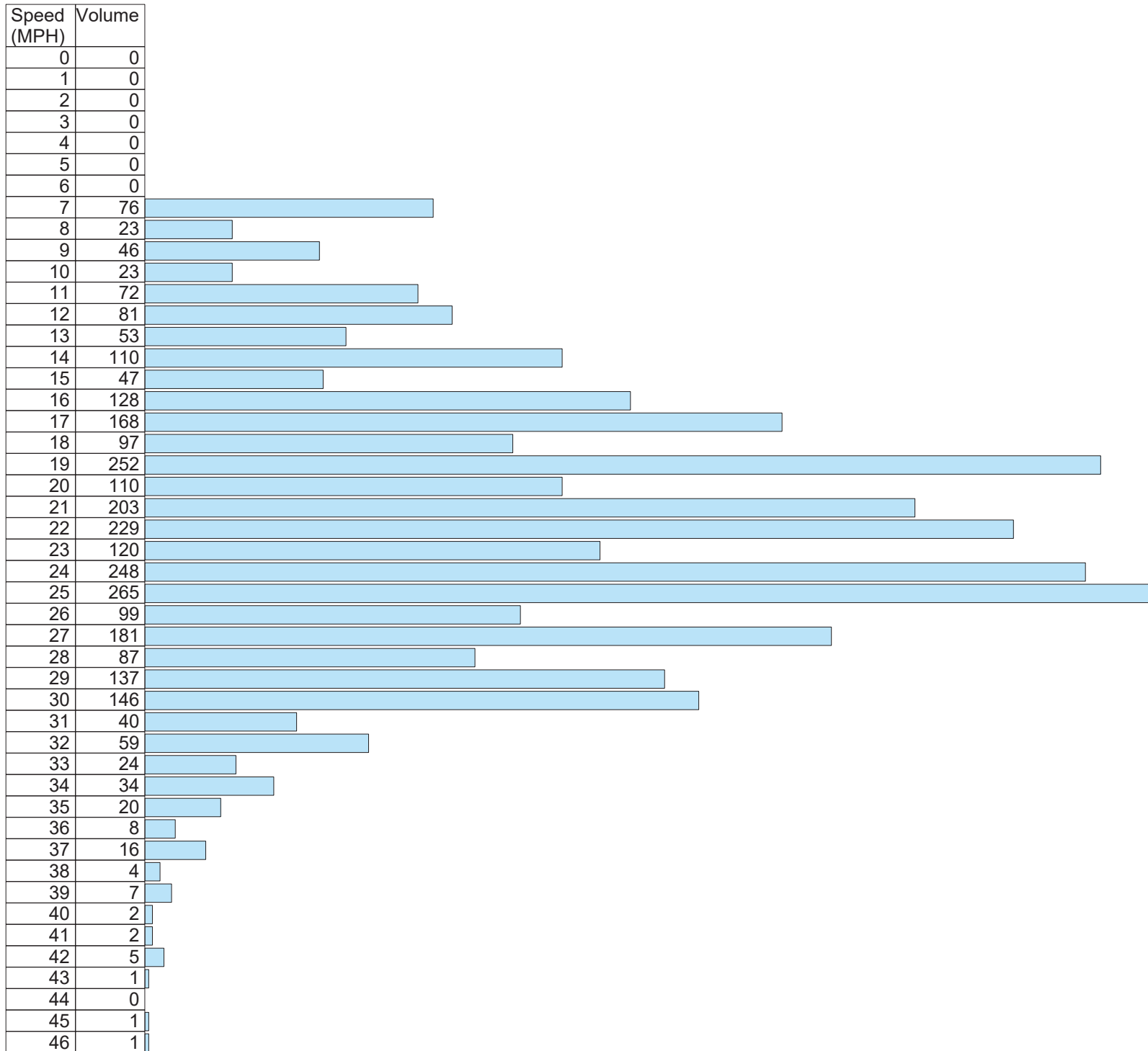
Site Code: Ridge St at Pacific St  
Latitude: 34.028293  
Longitude: -117.167662

Start Date: 9/29/2021  
End Date: 10/10/2021

**MUNICIPAL UTILITIES AND ENGINEERING DEPARTMENT  
TRAFFIC ANALYSIS**

Volume Sorted by Speed for 9/29/2021 to 10/10/2021

Combined



# City of REDLANDS

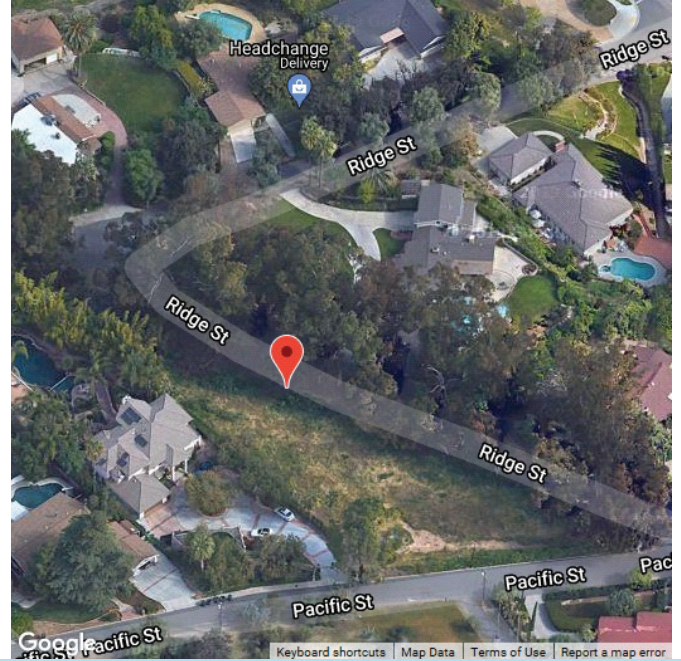
## MUNICIPAL UTILITIES AND ENGINEERING DEPARTMENT TRAFFIC ANALYSIS

### SPEED DATA ANALYSIS

#### Location



Latitude: 34.028713  
Longitude: -117.168763



#### Analysis Time Period



Start	End
9/29/2021	10/14/2021
9:21 AM	8:53 AM

#### Vehicles Analyzed



5,416

#### Average Speed



21

#### Speed Limit



25

#### 85th Percentile Speed



27



Site Code: Ridge St between Pacific St and Center St

Start Date: 9/29/2021

**MUNICIPAL UTILITIES AND ENGINEERING DEPARTMENT  
TRAFFIC ANALYSIS**

End Date: 10/14/2021

Latitude: 34.028713

Longitude: -117.168763

Combined Lanes 9/29/2021 to 10/14/2021

**Peak Analysis**

Classes Excluded From Peaks: None

Date	AM Peak	Hour Volume	Highest Interval Time	Highest Interval Volume	Peak Hour Factor	Pm Peak	Hour Volume	Highest Interval Time	Highest Interval Volume	Peak Hour Factor
9/29/2021	9:16 AM	27	9:30 AM	10	0.68	2:50 PM	35	2:50 PM	13	0.67
9/30/2021	7:46 AM	38	7:46 AM	13	0.73	2:56 PM	53	3:25 PM	20	0.66
10/1/2021	7:27 AM	46	7:35 AM	18	0.64	12:02 PM	42	12:03 PM	19	0.55
10/2/2021	9:12 AM	31	9:22 AM	10	0.78	12:29 PM	34	1:13 PM	13	0.65
10/3/2021	9:59 AM	36	10:20 AM	14	0.64	3:23 PM	27	3:48 PM	10	0.68
10/4/2021	7:25 AM	37	7:39 AM	13	0.71	4:54 PM	44	4:54 PM	16	0.69
10/5/2021	7:01 AM	45	7:34 AM	20	0.56	3:06 PM	50	3:40 PM	19	0.66
10/6/2021	10:25 AM	39	10:25 AM	12	0.81	2:01 PM	47	2:01 PM	16	0.73
10/7/2021	7:29 AM	35	7:29 AM	12	0.73	1:47 PM	41	1:47 PM	17	0.60
10/8/2021	10:56 AM	34	11:35 AM	15	0.57	1:26 PM	38	1:49 PM	15	0.63
10/9/2021	11:00 AM	32	11:44 AM	15	0.53	12:00 PM	33	12:23 PM	12	0.69
10/10/2021	9:54 AM	27	10:03 AM	11	0.61	5:04 PM	28	5:48 PM	10	0.70
10/11/2021	6:56 AM	33	7:30 AM	17	0.49	12:06 PM	35	12:38 PM	13	0.67
10/12/2021	10:59 AM	20	11:25 AM	9	0.56	2:56 PM	44	3:22 PM	14	0.79
10/13/2021	6:49 AM	41	7:33 AM	18	0.57	2:50 PM	39	3:34 PM	15	0.65
10/14/2021	7:06 AM	33	7:32 AM	13	0.63					

**Percentile Speeds**

Percentile	5th	10th	15th	20th	25th	30th	35th	40th	45th	50th	55th	60th	65th	70th	75th	80th	85th	90th
Speed - MPH	6.7	11.7	14.2	16.1	17.9	18.5	19.8	20.4	21	21.6	22.9	23.5	24.1	24.8	25.4	26.6	27.2	29

**AADT**

Date	Lane	AADT
9/29/2021	Northwest, Lane 1	142
9/29/2021	Southeast, Lane 2	118
9/29/2021	Day Total	260
9/30/2021	Northwest, Lane 1	212
9/30/2021	Southeast, Lane 2	236
9/30/2021	Day Total	448
10/1/2021	Northwest, Lane 1	200
10/1/2021	Southeast, Lane 2	224
10/1/2021	Day Total	424
10/2/2021	Northwest, Lane 1	170
10/2/2021	Southeast, Lane 2	174
10/2/2021	Day Total	344
10/3/2021	Northwest, Lane 1	147
10/3/2021	Southeast, Lane 2	141
10/3/2021	Day Total	288
10/4/2021	Northwest, Lane 1	182
10/4/2021	Southeast, Lane 2	204
10/4/2021	Day Total	386
10/5/2021	Northwest, Lane 1	201
10/5/2021	Southeast, Lane 2	218
10/5/2021	Day Total	419
10/6/2021	Northwest, Lane 1	206
10/6/2021	Southeast, Lane 2	217



Site Code: Ridge St between  
Pacific St and Center St

Start Date: 9/29/2021

**MUNICIPAL UTILITIES AND ENGINEERING DEPARTMENT**

End Date: 10/14/2021

Latitude: 34.028713

Longitude: -117.168763

**TRAFFIC ANALYSIS**

Date	Lane	AADT
10/6/2021	Day Total	423
10/7/2021	Northwest, Lane 1	198
10/7/2021	Southeast, Lane 2	188
10/7/2021	Day Total	386
10/8/2021	Northwest, Lane 1	168
10/8/2021	Southeast, Lane 2	164
10/8/2021	Day Total	332
10/9/2021	Northwest, Lane 1	146
10/9/2021	Southeast, Lane 2	181
10/9/2021	Day Total	327
10/10/2021	Northwest, Lane 1	132
10/10/2021	Southeast, Lane 2	149
10/10/2021	Day Total	281
10/11/2021	Northwest, Lane 1	167
10/11/2021	Southeast, Lane 2	170
10/11/2021	Day Total	337
10/12/2021	Northwest, Lane 1	133
10/12/2021	Southeast, Lane 2	143
10/12/2021	Day Total	276
10/13/2021	Northwest, Lane 1	186
10/13/2021	Southeast, Lane 2	222
10/13/2021	Day Total	408
10/14/2021	Northwest, Lane 1	37
10/14/2021	Southeast, Lane 2	40
10/14/2021	Day Total	77
Total		5416
Average		338





Site Code: Ridge St between  
 Pacific St and Center St  
 Latitude: 34.028713  
 Longitude: -117.168763

Start Date: 9/29/2021  
 End Date: 10/14/2021

**MUNICIPAL UTILITIES AND ENGINEERING DEPARTMENT**  
**TRAFFIC ANALYSIS**

Time	9/27/21 Mon	9/28/21 Tue	9/29/21 Wed	9/30/21 Thu	10/1/21 Fri	10/2/21 Sat	10/3/21 Sun	Week Average
12:00 AM	*	*	*	1	0	2	2	1
01:00	*	*	*	1	1	2	0	1
02:00	*	*	*	0	0	1	0	0
03:00	*	*	*	0	1	1	1	1
04:00	*	*	*	1	4	2	0	2
05:00	*	*	*	5	5	1	0	3
06:00	*	*	*	21	13	10	10	14
07:00	*	*	*	32	37	15	9	23
08:00	*	*	*	35	29	19	19	26
09:00	*	*	19	30	19	27	11	21
10:00	*	*	15	19	21	25	36	23
11:00	*	*	16	20	28	20	27	22
12:00 PM	*	*	18	26	40	26	25	27
01:00	*	*	22	34	36	27	16	27
02:00	*	*	23	26	33	26	22	26
03:00	*	*	31	51	31	19	19	30
04:00	*	*	25	27	33	17	20	24
05:00	*	*	27	33	22	24	23	26
06:00	*	*	21	38	26	24	16	25
07:00	*	*	14	21	19	11	14	16
08:00	*	*	12	11	12	15	9	12
09:00	*	*	14	8	8	19	3	10
10:00	*	*	1	6	3	4	3	3
11:00	*	*	2	2	3	7	3	3
Total	0	0	260	448	424	344	288	366
Percent	0.0%	0.0%	71.0%	122.4%	115.8%	94.0%	78.7%	100.0%
AM Peak			09:00	08:00	07:00	09:00	10:00	08:00
Volume			19	35	37	27	36	26
PM Peak			03:00	03:00	12:00 PM	01:00	12:00 PM	03:00
Volume			31	51	40	27	25	30



Site Code: Ridge St between  
 Pacific St and Center St  
 Latitude: 34.028713  
 Longitude: -117.168763

Start Date: 9/29/2021  
 End Date: 10/14/2021

**MUNICIPAL UTILITIES AND ENGINEERING DEPARTMENT**  
**TRAFFIC ANALYSIS**

Time	10/4/21 Mon	10/5/21 Tue	10/6/21 Wed	10/7/21 Thu	10/8/21 Fri	10/9/21 Sat	10/10/21 Sun	Week Average
12:00 AM	3	0	2	1	1	2	4	2
01:00	0	2	0	2	0	1	4	1
02:00	0	0	0	1	0	0	0	0
03:00	0	2	0	1	0	2	1	1
04:00	1	1	0	1	1	2	0	1
05:00	7	4	11	1	3	7	6	6
06:00	11	13	15	15	5	2	3	9
07:00	32	44	33	26	32	16	6	27
08:00	21	19	31	28	16	17	15	21
09:00	23	19	20	22	22	17	14	20
10:00	18	20	29	23	23	16	27	22
11:00	27	23	29	27	33	32	19	27
12:00 PM	23	35	24	35	19	33	19	27
01:00	31	29	29	26	31	23	20	27
02:00	29	34	46	32	25	24	17	30
03:00	36	45	36	28	29	19	26	31
04:00	22	29	28	39	21	23	20	26
05:00	41	28	29	18	15	23	25	26
06:00	16	29	23	35	11	20	17	22
07:00	18	10	16	11	13	19	19	15
08:00	14	13	7	8	11	9	8	10
09:00	5	14	9	3	8	9	3	7
10:00	5	6	4	2	10	10	6	6
11:00	3	0	2	1	3	1	2	2
Total	386	419	423	386	332	327	281	366
Percent	105.5%	114.5%	115.6%	105.5%	90.7%	89.3%	76.8%	100.0%
AM Peak	07:00	07:00	07:00	08:00	11:00	11:00	10:00	07:00
Volume	32	44	33	28	33	32	27	27
PM Peak	05:00	03:00	02:00	04:00	01:00	12:00 PM	03:00	03:00
Volume	41	45	46	39	31	33	26	31



Site Code: Ridge St between  
 Pacific St and Center St  
 Latitude: 34.028713  
 Longitude: -117.168763

Start Date: 9/29/2021  
 End Date: 10/14/2021

**MUNICIPAL UTILITIES AND ENGINEERING DEPARTMENT**  
**TRAFFIC ANALYSIS**

Time	10/11/21 Mon	10/12/21 Tue	10/13/21 Wed	10/14/21 Thu	10/15/21 Fri	10/16/21 Sat	10/17/21 Sun	Week Average
12:00 AM	0	0	0	0	0	*	*	0
01:00	1	0	1	3	*	*	*	1
02:00	0	0	0	0	*	*	*	0
03:00	2	0	0	0	*	*	*	0
04:00	2	0	1	2	*	*	*	1
05:00	4	0	6	1	*	*	*	3
06:00	7	0	16	17	*	*	*	10
07:00	31	0	41	30	*	*	*	26
08:00	18	0	29	24	*	*	*	18
09:00	22	0	20	*	*	*	*	14
10:00	23	0	25	*	*	*	*	16
11:00	23	20	29	*	*	*	*	24
12:00 PM	31	25	25	*	*	*	*	27
01:00	28	38	27	*	*	*	*	31
02:00	22	29	29	*	*	*	*	27
03:00	25	42	39	*	*	*	*	35
04:00	30	37	30	*	*	*	*	32
05:00	23	24	30	*	*	*	*	26
06:00	17	22	24	*	*	*	*	21
07:00	7	16	15	*	*	*	*	13
08:00	8	10	9	*	*	*	*	9
09:00	5	8	5	*	*	*	*	6
10:00	8	4	5	*	*	*	*	6
11:00	0	1	2	*	*	*	*	1
Total	337	276	408	77	0	0	0	347
Percent	97.1%	79.5%	117.6%	22.2%	0.0%	0.0%	0.0%	100.0%
AM Peak	07:00	11:00	07:00	07:00				07:00
Volume	31	20	41	30				26
PM Peak	12:00 PM	03:00	03:00					03:00
Volume	31	42	39					35

Site Code: Ridge St between  
Pacific St and  
Center St

**MUNICIPAL UTILITIES AND ENGINEERING DEPARTMENT**

Start Date: 9/29/2021

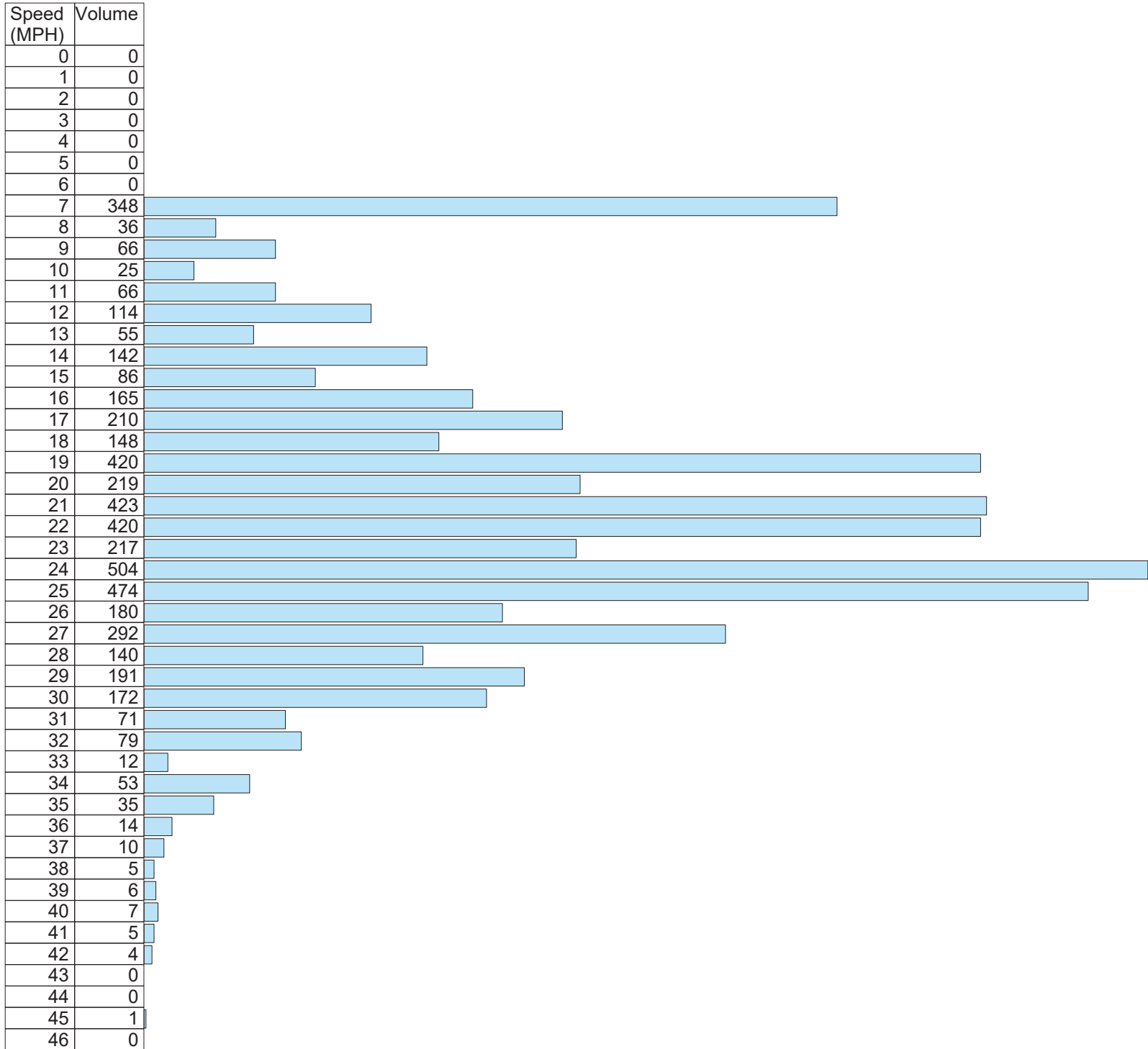
**TRAFFIC ANALYSIS**

End Date: 10/14/2021

Latitude: 34.028713  
Longitude: -117.168763

Volume Sorted by Speed for 9/29/2021 to 10/14/2021

Combined



**AGENDA ITEM 5C, ATTACHMENT D**

**Traffic Collision History**

Location: Ridge Street between Center Street and Sunset Drive  
 Speed limit: 25 mph

No.	Date	TIME	LOCATION	COLLISSION TYPE	CAUSE	ROAD SURFACE	SEVERITY	NUMBER DAMAGED	NUMBER INJURED	NUMBER KILLED	WEATHER CONDITION	COLLISSION WITH
1	10/25/2019	11:43	W SUNSET DR & RIDGE ST	HIT OBJECT	OVER SPEED LIMIT	DRY	INJURY	0	1	0	CLEAR	FIXED OBJECT
2	4/21/2018	8:23	1506 RIDGE ST	SIDE SWIPE	OVER SPEED LIMIT	DRY	PROPERTY DAMAGE	0	0	0	CLEAR	FIXED OBJECT
3	4/28/2014	7:08	RIDGE ST & S CENTER ST	HIT OBJECT	IMPROPER BACKING	DRY	PROPERTY DAMAGE	0	0	0	CLEAR	FIXED OBJECT
4	11/19/2013	1:22	W SUNSET DR & RIDGE ST	HIT OBJECT	DUI	DRY	INJURY	0	1	0	CLEAR	FIXED OBJECT
5	7/29/2012	19:35	RIDGE ST & S CENTER ST	HIT OBJECT	DUI	DRY	INJURY	0	2	0	CLEAR	FIXED OBJECT
6	12/17/2007	20:50	W SUNSET DR & RIDGE ST	HIT OBJECT	IMPROPER LANE CHANGE OR USAGE	DRY	PROPERTY DAMAGE	0	0	0	CLEAR	FIXED OBJECT

**REQUEST FOR COMMISSION ACTION**

**SUBJECT: REQUEST TO ESTABLISH A 270 FEET 'NO-PARKING ZONE' ON LUGONIA AVENUE AT THE NORTHWEST CORNER OF THE TEXAS STREET INTERSECTION**

**MOTION:**

I move to recommend to City Council approval of the request to establish a 270 feet 'No-Parking Zone' on Lugonia Avenue at the northwest corner of the Texas Street intersection.

**STAFF RECOMMENDATION:**

Staff recommends approval of the request to establish a 270 feet 'No-Parking Zone' on Lugonia Avenue at the northwest corner of the Texas Street intersection.

**DISCUSSION:**

Residents expressed safety concerns about on-street parking on Lugonia Avenue at the northwest corner of the Texas Street intersection. Presently, westbound Lugonia Avenue transitions from two lanes to one lane as it crosses Texas Street. The outer lane on westbound Lugonia Avenue, west of Texas Street has approximately 320 feet to merge lanes. Residents claim that vehicles are side-swiping parked vehicles as they try to merge lanes.

Staff met with residents at the location and determined that the existing 14 feet width of the outer lane does not allow sufficient room for on-street parking westbound on Lugonia Avenue west of Texas Street. American Association of State Highways and Transportation Officials (AASHTO), A Policy on Geometric Design of Highways and Streets recommends a minimum lane width of 18 feet for on-street parallel parking. Currently, the proposed section of Lugonia Avenue has existing no-parking signs, however, no resolution exists for a no-parking zone and is therefore non-enforceable.

During the February 23, 2022 commission meeting, Staff recommended a 270 feet 'no-parking zone' on Lugonia Avenue at the northwest corner of the Texas Street intersection. Staff stated that the 'no-parking zone' will permit lane restriping to allow the transition from a 15 feet lane to a 24 feet lane to allow sufficient road width for on street parking and enforce the current no parking zone in place. The commission suggested Staff present alternatives to clarify the merging of lanes in an upcoming commission meeting.

Staff reevaluated the area and is recommending a 270 feet 'no-parking zone' on Lugonia Avenue at the northwest corner of the Texas Street intersection. In order to clearly define the merging lane and allow residents to park in the frontage of their property, Staff will

Commission Meeting of 3/24/22

Request to Establish a 270 Feet 'No-Parking Zone' on Lugonia Avenue at the Northwest Corner of the Texas Street Intersection.

Page 2 of 3

define the allowable parking area with a solid white line edge marking the right edge of the roadway which will taper to an 8 feet offset from the curb and add cross hatching markings to no-parking areas. In addition, Staff will shift merging arrows and lane striping. Staff will add lane ends warning signs for additional visual cues to motorists. This design is consistent with other street segments throughout the City including the Lugonia Avenue and Dearborn Street intersection.

Staff is recommending approval of the request to establish a 270 feet 'no-parking zone' on Lugonia Avenue at the northwest corner of the Texas Street intersection, per Section 10.40.040 of the Redlands Municipal Code. The no-parking zone will permit the transition of an 8 feet offset edge striping to allow sufficient road width for on street parking and enforce the current no parking zone in place.

**ALTERNATIVES:**

The commission may deny the request.

**FISCAL IMPACT:**

There is no fiscal impact associated with this action related to the costs including equipment and materials. Work will be performed by City Staff as maintenance.

**ATTACHMENTS:**

- A. Location Maps
- B. Request Letter
- C. Collision History

Prepared by:

---

**JOHANA SILVA**  
Assistant Engineer

Reviewed by:

---

**GOUTAM K. DOBEY**  
Engineering Manager

Reviewed by:

---

**JOHN R. HARRIS**  
Municipal Utilities and Engineering Director

Reviewed by:

---

**CHRIS BOATMAN**  
Assistant City Manager

Reviewed by:

---

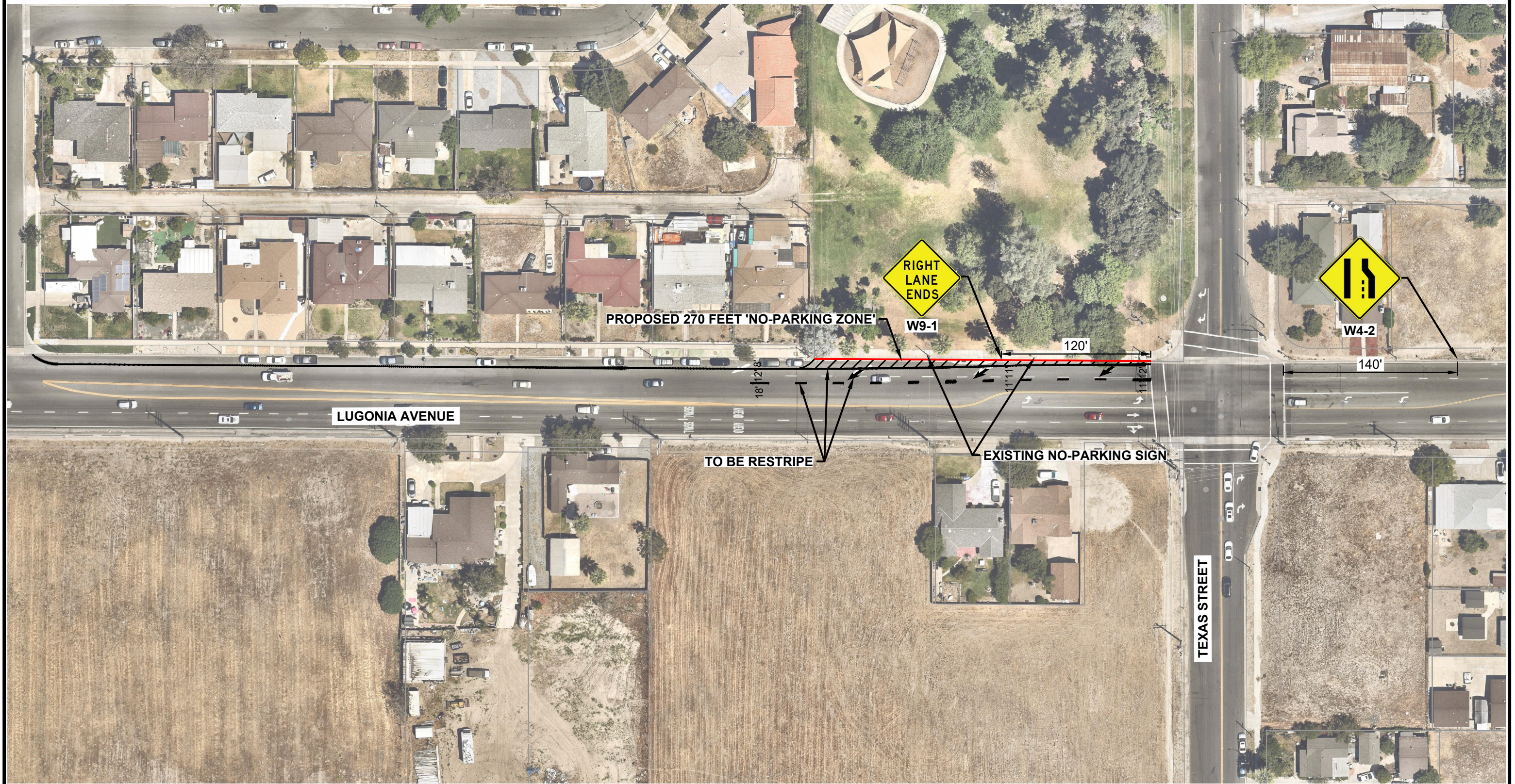
**CHRIS CATREN**  
Police Chief

Reviewed by:

---

**RICH SESSLER**  
Interim Fire Chief





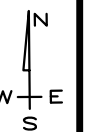
**LEGEND**

- PROPOSED NO PARKING ZONE
- RECOMMENDED LANE STRIPING
- RECOMMENDED EDGE STRIPING
- PROPERTY RIGHT-OF-WAY LINE

**CITY OF REDLANDS**  
Municipal Utilities and Engineering Department

**LUGONIA AVENUE  
PROPOSED 'NO-PARKING ZONE'**

**EXHIBIT**  
NTS



# Location Map

Existing striping for merging lane on westbound Lugonia Avenue at Dearborn Street



Existing striping for merging right lane

E LUGONIA AVE

FOOTHILL WAY

SUNDOWN CT

COUNTRY PL

N DEARBORN ST

HEATH ST



Scale



March 17, 2022

OneStop.mxd

## **AGENDA ITEM 6A, ATTACHMENT B**

Good afternoon

The merging lanes that go west passing Texas St is not safe and has caused a few car accidents already. This is not including the ones that have almost occurred. I know this because there are cars honking at each other all day due to cars not allowing other cars to merge. This has been an issue since the street was repainted approximately 3 years ago. This street is unsafe and therefore needs to be repainted so that there is no worry that a car can come from behind and can rear end one of the parked cars.

Thank you



# AGENDA ITEM 6A, ATTACHMENT C (2 PAGES)

## Traffic Collision History

Location: W Lugonia Avenue & Texas Street

Control Type: Traffic Signal

Speed limit: 35 mph Lugonia Avenue

Street Lights: Yes

40 mph Texas Street

No.	Date	TIME	COLLISSION TYPE	CAUSE	ROAD SURFACE	SEVERITY	DAMAGE	NUMBER INJURED	NUMBER KILLED	WEATHER CONDITION	COLLISSION WITH
1	11/4/2021	1030	BROADSIDE	OTHER	DRY	INJURY	0	1	0	CLEAR	PARKED MOTOR VEHICLE
2	7/17/2021	2036	REAR END	OVER SPEED LIMIT	DRY	INJURY	0	1	0	CLEAR	PARKED MOTOR VEHICLE
3	7/3/2021	109	REAR END	DUI	DRY	PROPERTY DAMAGE	0	0	0	CLEAR	PARKED MOTOR VEHICLE
4	6/23/2021	1411	REAR END	OVER SPEED LIMIT	DRY	PROPERTY DAMAGE	0	0	0	CLEAR	OTHER MOTOR VEHICLE
5	9/3/2020	1618	OTHER	FAILED TO YIELD RIGHT OF WAY	DRY	INJURY	0	1	0	CLEAR	BICYCLE
6	8/29/2020	318	OVERTURNED	DUI	DRY	PROPERTY DAMAGE	0	0	0	CLEAR	FIXED OBJECT
7	6/25/2020	1317	REAR END	OVER SPEED LIMIT	DRY	INJURY	0	1	0	CLEAR	OTHER MOTOR VEHICLE
8	2/26/2020	1005	BROADSIDE	IMPROPER TURN OR U-TURN	DRY	INJURY	0	0	0	CLEAR	MOTOR VEHICLE ON OTHER ROADWAY
9	8/19/2019	1856	SIDE SWIPE	OVER SPEED LIMIT	DRY	PROPERTY DAMAGE	0	0	0	CLEAR	PARKED MOTOR VEHICLE
10	12/21/2018	1712	SIDE SWIPE	FAILED TO YIELD RIGHT OF WAY	DRY	INJURY	0	1	0	CLEAR	OTHER MOTOR VEHICLE
11	12/13/2018	2050	REAR END	OVER SPEED LIMIT	DRY	PROPERTY DAMAGE	0	0	0	CLEAR	OTHER MOTOR VEHICLE
12	9/14/2018	2053	HIT OBJECT	PEDESTRIAN VIOLATION	DRY	PROPERTY DAMAGE	0	0	0	CLEAR	PEDESTRIAN
13	9/6/2018	1820	BROADSIDE	IMPROPER TURN OR U-TURN	DRY	INJURY	0	1	0	CLEAR	OTHER MOTOR VEHICLE
14	7/13/2018	1419	REAR END	IMPROPER TURN OR U-TURN	DRY	PROPERTY DAMAGE	0	0	0	CLEAR	PARKED MOTOR VEHICLE
15	7/7/2018	1430	REAR END	OVER SPEED LIMIT	DRY	PROPERTY DAMAGE	0	0	0	CLOUDY	OTHER MOTOR VEHICLE
16	11/8/2016	1648	SIDE SWIPE	IMPROPER PASSING	DRY	PROPERTY DAMAGE	0	0	0	CLEAR	OTHER MOTOR VEHICLE
17	7/15/2016	1618	BROADSIDE	FAILED TO HEED SIGN OR SIGNAL	DRY	PROPERTY DAMAGE	0	0	0	CLEAR	OTHER MOTOR VEHICLE
18	9/12/2015	1352	BROADSIDE	IMPROPER TURN OR U-TURN	DRY	INJURY	0	1	0	CLEAR	OTHER MOTOR VEHICLE
19	5/18/2015	1008	REAR END	OVER SPEED LIMIT	DRY	PROPERTY DAMAGE	0	0	0	CLOUDY	OTHER MOTOR VEHICLE
20	2/6/2015	1910	SIDE SWIPE	DUI	DRY	PROPERTY DAMAGE	0	0	0	CLEAR	PARKED MOTOR VEHICLE
21	1/5/2015	2355	REAR END	IMPROPER TURN OR U-TURN	DRY	PROPERTY DAMAGE	0	0	0	CLEAR	PARKED MOTOR VEHICLE
22	11/27/2013	1649	REAR END	OVER SPEED LIMIT	DRY	PROPERTY DAMAGE	0	0	0	CLEAR	OTHER MOTOR VEHICLE
23	6/9/2013	126	HIT OBJECT	IMPROPER LANE CHANGE OR USAGE	DRY	PROPERTY DAMAGE	0	0	0	CLEAR	FIXED OBJECT
24	2/27/2013	1213	REAR END	OVER SPEED LIMIT	DRY	INJURY	0	1	0	CLEAR	OTHER MOTOR VEHICLE
25	6/25/2012	819	BROADSIDE	OTHER	DRY	PROPERTY DAMAGE	0	0	0	CLEAR	OTHER MOTOR VEHICLE
26	6/22/2012	1841	REAR END	OVER SPEED LIMIT	DRY	PROPERTY DAMAGE	0	0	0	CLEAR	OTHER MOTOR VEHICLE
27	5/7/2012	1511	SIDE SWIPE	FAILED TO HEED SIGN OR SIGNAL	DRY	INJURY	0	1	0	CLEAR	OTHER MOTOR VEHICLE
28	1/18/2012	1907	SIDE SWIPE	IMPROPER TURN OR U-TURN	DRY	PROPERTY DAMAGE	0	0	0	CLEAR	PARKED MOTOR VEHICLE
29	1/14/2012	2152	HIT OBJECT	IMPROPER TURN OR U-TURN	DRY	PROPERTY DAMAGE	0	0	0	CLEAR	FIXED OBJECT
30	12/11/2011	1901	REAR END	OVER SPEED LIMIT	DRY	PROPERTY DAMAGE	0	0	0	CLEAR	OTHER MOTOR VEHICLE
31	10/29/2011	1418	BROADSIDE	IMPROPER TURN OR U-TURN	DRY	INJURY	0	1	0	CLEAR	OTHER MOTOR VEHICLE
32	4/8/2011	1223	REAR END	IMPROPER TURN OR U-TURN	DRY	PROPERTY DAMAGE	0	0	0	CLEAR	OTHER MOTOR VEHICLE
33	12/12/2010	1915	REAR END	IMPROPER TURN OR U-TURN	DRY	INJURY	0	1	0	CLEAR	OTHER MOTOR VEHICLE
34	11/4/2010	1830	HIT OBJECT	IMPROPER TURN OR U-TURN	DRY	PROPERTY DAMAGE	0	0	0	CLEAR	PARKED MOTOR VEHICLE
35	7/19/2010	1754	REAR END	OVER SPEED LIMIT	DRY	INJURY	0	2	0	CLEAR	OTHER MOTOR VEHICLE
36	6/1/2010	1729	REAR END	OVER SPEED LIMIT	DRY	PROPERTY DAMAGE	0	0	0	CLEAR	OTHER MOTOR VEHICLE
37	2/10/2010	1253	BROADSIDE	FAILED TO HEED SIGN OR SIGNAL	DRY	INJURY	0	1	0	CLEAR	OTHER MOTOR VEHICLE
38	1/16/2010	1145	BROADSIDE	FAILED TO HEED SIGN OR SIGNAL	DRY	INJURY	0	1	0	CLEAR	BICYCLE
39	1/6/2010	1845	HIT OBJECT	DUI	DRY	PROPERTY DAMAGE	0	0	0	CLEAR	FIXED OBJECT
40	12/18/2008	652	REAR END	OVER SPEED LIMIT	WET	PROPERTY DAMAGE	0	0	0	CLEAR	OTHER MOTOR VEHICLE
41	8/28/2008	757	REAR END	IMPROPER LANE CHANGE OR USAGE	DRY	PROPERTY DAMAGE	0	0	0	CLEAR	OTHER MOTOR VEHICLE

## Traffic Collision History

42	7/31/2008	1419	REAR END	OVER SPEED LIMIT	DRY	PROPERTY DAMAGE	0	0	0	CLEAR	<Null>
43	5/5/2008	1941	REAR END	DUI	DRY	INJURY	0	0	0	CLEAR	OTHER MOTOR VEHICLE
44	5/5/2008	902	SIDE SWIPE	IMPROPER TURN OR U-TURN	DRY	INJURY	0	1	0	CLOUDY	BICYCLE
45	8/2/2007	2024	REAR END	OVER SPEED LIMIT	DRY	PROPERTY DAMAGE	0	0	0	CLEAR	OTHER MOTOR VEHICLE
46	2/18/2007	1003	HEAD ON	OVER SPEED LIMIT	DRY	INJURY	0	1	0	CLEAR	FIXED OBJECT
47	2/9/2007	2213	REAR END	DUI	DRY	PROPERTY DAMAGE	0	0	0	CLEAR	PARKED MOTOR VEHICLE
48	11/22/2006	2055	BROADSIDE	DUI	DRY	PROPERTY DAMAGE	0	0	0	CLEAR	OTHER MOTOR VEHICLE
49	11/22/2006	1936	REAR END	OVER SPEED LIMIT	DRY	INJURY	0	1	0	CLEAR	OTHER MOTOR VEHICLE